

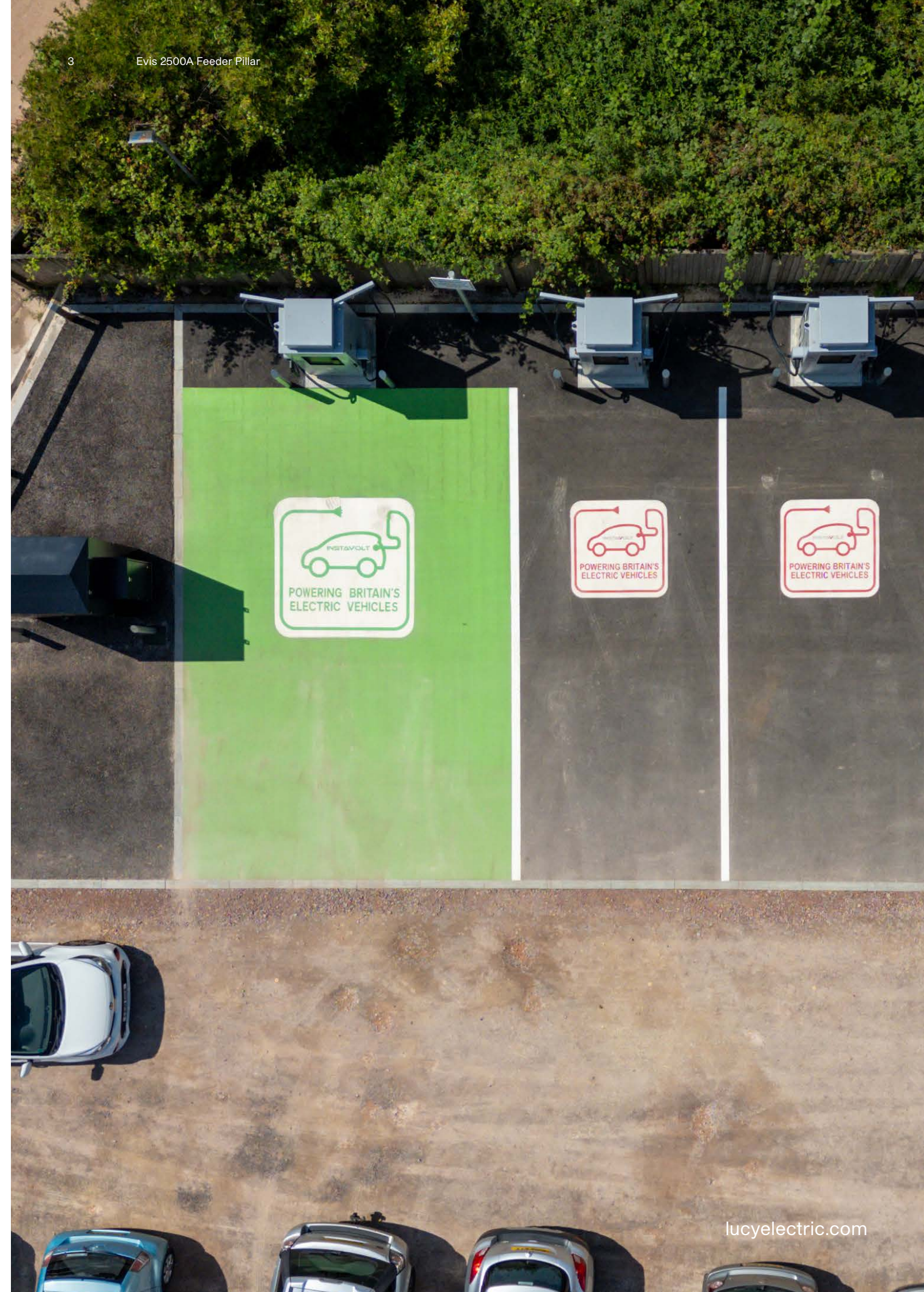
Evis 2500A Feeder Pillar

The Evis 2500A LV Feeder Pillar is Lucy Electric's most powerful low-voltage distribution solution, engineered to meet the growing demands of rapid and ultra-rapid EV charging infrastructure.

Designed for large-scale EV hubs, it supports charge points from 150kW to 350kW and provides up to 10 outgoing ways, enabling the seamless integration of multiple high-power chargers within a single pillar.

Delivered fully assembled to customer specification, the Evis 2500A reduces installation time, streamlines project delivery, and lowers costs for Charge Point Operators (CPOs). Built with scalability in mind, it also allows existing 150kW chargers to be upgraded to 350kW units directly on-site, ensuring infrastructure keeps pace with advancing EV technology.

With robust construction, full IEC 61439 type-testing, and advanced protection options, the Evis 2500A is a futureproof, reliable, and flexible platform for the next generation of EV charging networks.



Smarter Metering (COP5)

Accurate metering is critical for billing and compliance. The Evis 2500A is designed to simplify metering and add value to the network.

- Full visibility of LV unit metering
- Higher asset value – ICPs can take on more network ownership
- Lower legal responsibility for CPOs and end users
- Segregated, lockable metering areas for ICP, IDNO and customer

Engineered for performance. Built for reliability

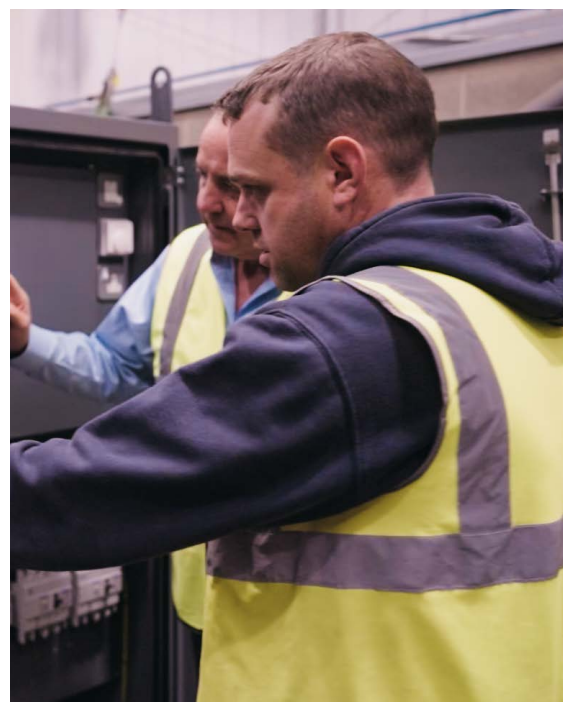
- 3mm pre-galvanised mild steel with powder coat finish (RAL to spec)
- IP54 for outdoor environments. (without the need for a GRP cover)
- Internal IP2X internal architecture
- Tested to IK10 impact rating
- Practical features: lifting eyes, mounting plinth, fixable door stays
- Fully type-tested to IEC 61439

Safety & Compliance

The EVIS 2500A isn't just compliant – it's tested to the highest standards:

- BS EN IEC 61439 (Parts 1, 2 & 7)
- IEC 61439-7 for petrol forecourt

Type tests covering temperature rise, corrosion resistance, short circuit withstand, power frequency & impulse voltage.



Evis 2500A EV Feeder Pillar



The Evis 2500A feeder pillar is Lucy Electric's flagship LV distribution solution, engineered for the most demanding EV charging environments. Designed with direct customer input, it combines installer-friendly features, rugged construction, and full type-testing to IEC 61439 for safe, reliable performance.

OVERVIEW

- Customer-influenced design with installer-friendly layout for faster, simpler installation
- Robust construction – naturally ventilated, with pad-lockable doors and internally secured panels
- Fully type-tested to BS EN IEC 61439 including 61439-7 forecourt compliance
- Smart-ready – monitoring, metering, and control options available

Enclosure & Construction

- Powder-coated sheet steel, front lockable doors for full access
- Naturally ventilated, IP54 for outdoor applications (no GRP cover required)
- IP2X internal architecture with steel supports and perforated partitioning
- Form of Separation: Form 4b, Type 2

- Impact resistance: IK10
- Colours: green, black, grey (special colours available on request)

Power Distribution

- Fully rated 2500A plated copper busbar (Neutral and Earth in 50% or 100%)
- ACB incomers up to 2500A (4-pole)
- MCCB outgoing: 250A, 400A, 630A, and 800A (3- or 4-pole, mixable)
- Terasaki devices for incomers and outgoing



Safety & Operation

- Pad-lockable doors for added security
- Integrated Residual Current Protection (CBRs)
- Direct Opening Mechanism for safe operation
- Superior temperature performance

Evis 2500A EV Feeder Pillar

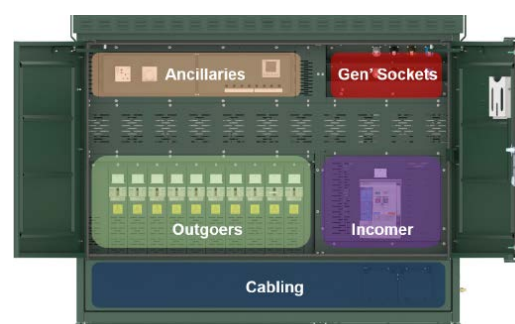


Options

- Monitoring & Control
- Surge protection devices (MCCB protected)
- Monitoring, metering, and CTs – metered internally or via RJ45 to Ethernet
- Motorised control of ACBs/MCCBs for remote operation
- COP5 metering area – secure, accessible metering compartment
- Landlord supply: MCCB-protected circuits (63A–125A) for car park lighting, cabin power, etc.
- Earth fault detection (to BS7671)
- 240V RCBO-protected supply with 13A socket
- Internal LED lighting (switchable)
- Humidity control heaters with thermostat to prevent condensation
- Generator sockets up to 800A
- Alternative earthing arrangements based on site requirements
- Custom colours on request

Intelligent Architecture

- Intuitive layout with clear demarcation of functional areas
- Tools required for removal of internal partitions for safe maintenance and inspection
- Designed to simplify installation, operation, and long-term servicing



EVIS 3200A COMING SOON



Tailored solutions. Expert support.

A trusted partner from design to energisation



In-house design team – custom layouts to match project requirements



Seamless integration from design through to installation



On-site service team – support, troubleshooting, maintenance



Rapid response and flexibility during projects





lucyelectric.com

Our international offices:

Lucy Electric UK Ltd
Howland Road, Thame,
Oxfordshire
OX9 3UJ
United Kingdom

t: +44 (0)1844 267 267
e: salesuk@lucyelectric.com

Lucy Electric GridKey Ltd
8 Argent Court, Sylvan Way
Southfields Business Park
Basilston, Essex
SS15 6TH
United Kingdom

t: +44 (0) 1268 850000
e: sales@gridkey.co.uk

Lucy Electric GridKey Swindon
607 Delta,
Welton Road
Swindon
SN5 7XF
United Kingdom

e: sales@gridkey.co.uk

Lucy Middle East FZE
PO Box 17335, Jebel Ali
Dubai
PO Box 17335
United Arab Emirates

t: +97 148 129 999
e: salesme@lucyelectric.com

Lucy Electric (Thailand) Ltd
388 Exchange Tower,
37th Flr Unit 3702,
Sukhumvit Road
Klongtoey Sub district
Klongtoey District, Bangkok
10110
Thailand

t: +66 (02) 663 4290
e: salesThailand@lucyelectric.com

Lucy Electric (South Africa)
Unit 12 & 13, Block C,
Honeydew Business Park,
1500 Citrus Street, Laser Park
Honeydew
P.O. Box 1078, 2040
South Africa

t: +27 11 025 7490
e: salesza@lucyelectric.com

Lucy Asia Pacific Sdn Bhd
L17-05-06, PJX-HM Shah Tower,
No 6A, Jalan Persiaran Barat
Petaling Jaya,
Selangor, Malaysia
46050
Malaysia

t: +603 74910700
e: salesmalaysia@lucyelectric.com

Lucy Equipamentos Eléctricos Ltda
Av. das Araucárias 2558 Thomaz
Coelho, CEP 83707-067
Thomaz Coelho, Araucária,
State of Paraná, Brazil
83707-065
Brazil

t: +55 (41) 2106 2801
e: salesbrazil@lucyelectric.com

Lucy Electric Manufacturing &
Technologies India (Private) Ltd
Village Noorpura,
Baska besides Polycab
Halo Baroda Toll road, Taluka Halo
Panchmahal, Gujarat
388350
India

t: +91 2676 304912

Lucy Electric India Private Ltd
2B-46 & 47, 2nd Floor
Kurla West
Mumbai
400070
India

t: +91 22 62366616

Lucy Electric East Africa
13th Floor Landmark Plaza
Argwings Khodhek Road
Nairobi
P.O. Box-00606 - 00400
Kenya

t: +254 (0) 203 673 927

Lucy Switchgear Arabia Co. Ltd
Novotel Business Centre
Dammam
P.O. Box 35340, Dammam 31488
Saudi Arabia

t: +966 139 147 910
e: salesksa@lucyelectric.com

Lucy Switchgear Arabia Ltd
Tahlia St. Andalus Dist.
Jameel Square Center,
Office No 118
Jeddah
21533
Saudi Arabia

t: +966 02 6648573

Lucy Electric Australasia Pty Ltd
t: +61 467 237 879
e: salesaustralia@lucyelectric.com