

CIRCUIT BREAKER OPERATION

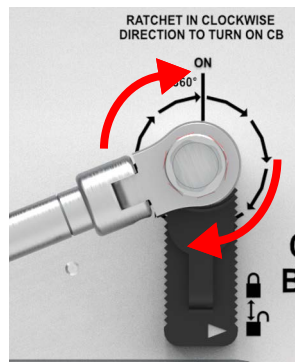
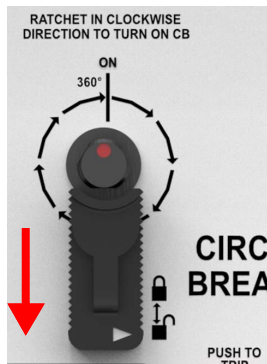
CIRCUIT BREAKER 'OFF' to 'ON'

! INFORMATION

Check the Disconnecter is in the 'ON' position before operating.



- 1 : Remove 'CIRCUIT BREAKER' padlock if fitted and pull down the 'CIRCUIT BREAKER' slide cover to the unlocked position.
With the operating handle on the 'CIRCUIT BREAKER' boss, rotate the ratchet mechanism 360° clockwise. The ratchet mechanism enables this operation to be carried out in multiple small rotations. At the end of the operation the 'CIRCUIT BREAKER' will close to main 'ON'.



CIRCUIT BREAKER 'ON' to 'OFF'

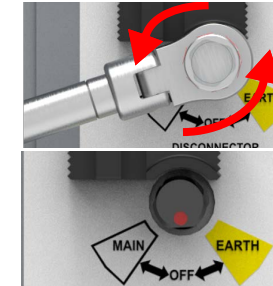
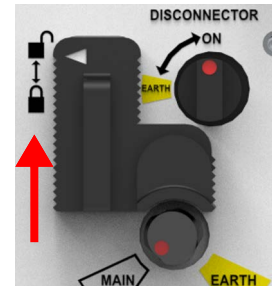
- 1 : Remove padlock if fitted from 'CIRCUIT BREAKER' Mechanism OFF button (RED BUTTON) and Press in the 'CIRCUIT BREAKER' Mechanism 'OFF' button to trip.
- 2 : Then release once the 'CIRCUIT BREAKER' has tripped. If required secure the 'CIRCUIT BREAKER' Mechanism 'OFF' button using a padlock.

Note: Do not use excessive force on the 'CIRCUIT BREAKER' OFF button.

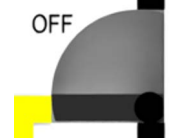


CIRCUIT BREAKER 'OFF' to 'EARTH ON'

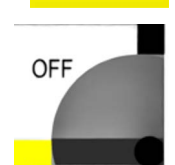
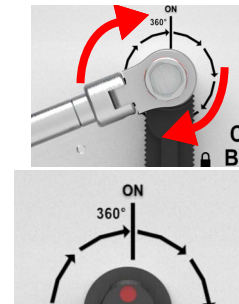
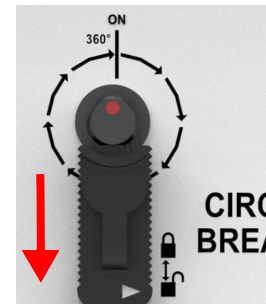
- 1 : Remove 'DISCONNECTOR' padlock if fitted and lift up the 'DISCONNECTOR' slide cover to the 'unlocked' position.
- 2 : With the operating handle on the 'DISCONNECTOR' boss, rotate anti-clockwise into 'OFF'.



- 3 : Rotate the 'DISCONNECTOR' anti-clockwise to 'EARTH'.
- 4 : With the operating handle on the 'DISCONNECTOR' boss, rotate anti-clockwise into 'EARTH ON'.



- 5 : Remove 'CIRCUIT BREAKER' padlock if fitted and pull down the slide cover to the 'unlocked' position. With the operating handle on the 'CIRCUIT BREAKER' boss, rotate the ratchet mechanism 360° clockwise. The ratchet mechanism enables this operation to be carried out in multiple small rotations. At the end of the operation the 'CIRCUIT BREAKER' will close to main 'EARTH-ON'.

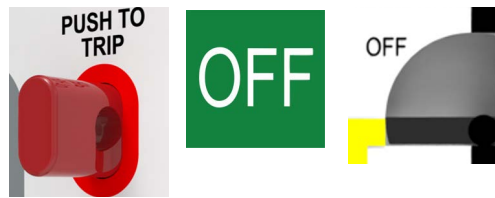


CIRCUIT BREAKER 'EARTH-ON' to 'OFF' & DISCONNECTOR to 'MAIN SWITCH'

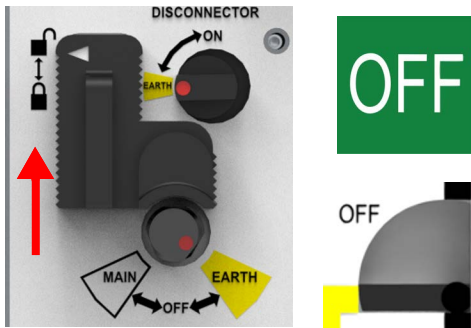
1 : Remove padlock if fitted, press the Red Trip Button.



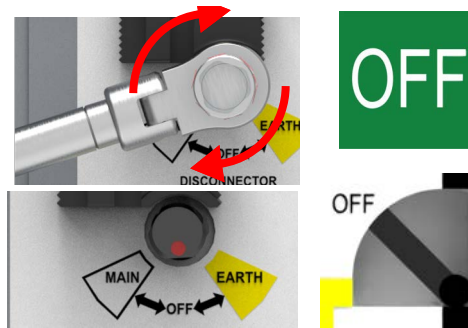
2 : Indicator shows 'OFF'



3 : Remove 'DISCONNECTOR' padlock if fitted and lift up the DISCONNECTOR slide cover to the 'unlocked' position.



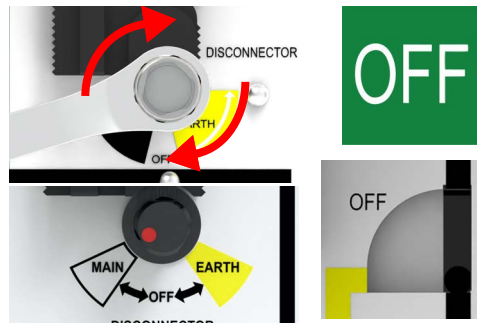
4 : Rotate the 'DISCONNECTOR' clockwise to 'OFF'.



5 : Rotate the DISCONNECTOR clockwise to 'ON' Switch.



6 : With the operating handle on the DISCONNECTOR boss, rotate clockwise into 'MAIN SWITCH'.



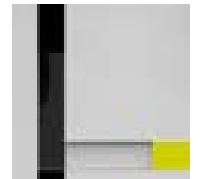
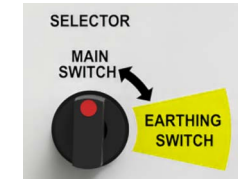
WARNING

If the operator does not follow the correct operating procedure whilst operating either mechanisms there is the potential for the fail-safe facility within the handle to operate and render the operating handle useless for further operations.

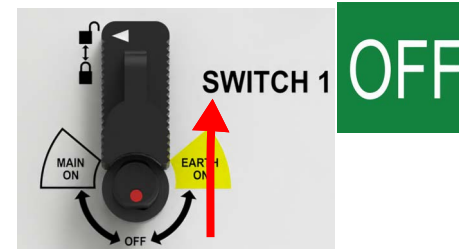
LOAD BREAK SWITCH 1 OPERATION

LOAD BREAK SWITCH 1 from 'OFF' to 'ON' ('MAIN SWITCH' selected)

For this operation, the 'SELECTOR' must be in the 'MAIN SWITCH'. **Note:** Active mimic changes in accordance with the selector position.



1 : Remove 'SWITCH 1' padlock if fitted and lift up the switch slide cover to the 'unlocked' position.

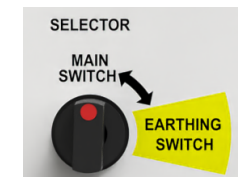


2 : With the operating handle on the switch boss, rotate clockwise until the switch closes 'ON'.

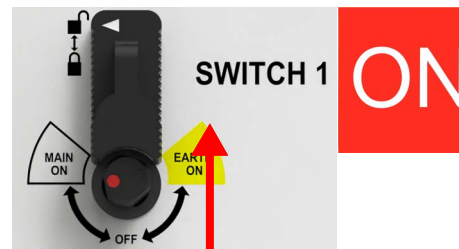


LOAD BREAK SWITCH 1 from 'ON' to 'OFF'

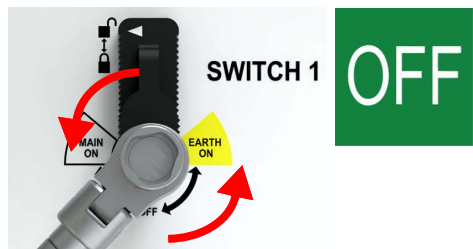
For this operation, the 'SELECTOR' must be in the 'MAIN SWITCH'. **Note:** Active mimic changes in accordance with the selector position.



1 : Remove 'SWITCH 1' padlock if fitted and lift up the switch slide cover to the 'unlocked' position.



2 : With the operating handle on the switch boss, rotate anti-clockwise until the switch opens 'OFF'.



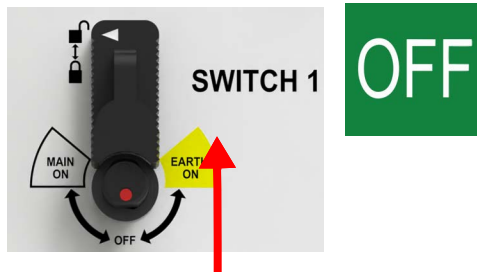
LOAD BREAK SWITCH 1 from 'OFF' to 'EARTH-ON'

For this operation, the 'LOAD BREAK SWITCH 1' must be in it's 'OFF' position.

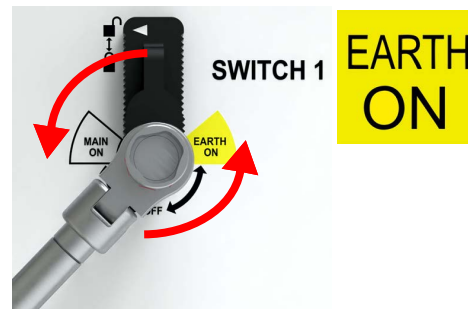
1 : Rotate the 'SELECTOR' knob clockwise to 'EARTHING SWITCH'.



2 : Remove 'SWITCH 1' padlock if fitted and lift up the switch slide cover to the 'unlocked' position.



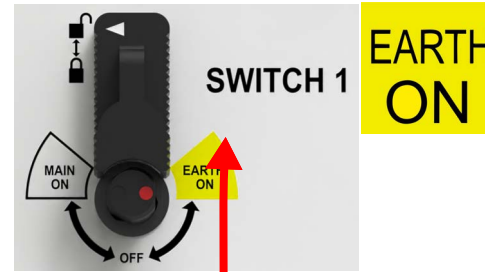
3 : With the operating handle on the 'SWITCH 1' boss, rotate anti-clockwise until the switch closes 'EARTH ON'.



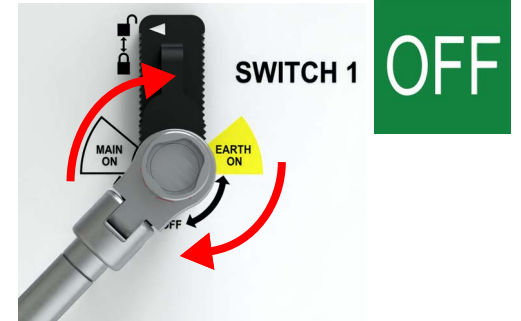
LOAD BREAK SWITCH 1 from 'EARTH-ON' to 'OFF' & 'SELECTOR' to 'MAIN SWITCH'

For this operation, the 'LOAD BREAK SWITCH 1' must be in it's 'EARTH-ON' position.

1 : Remove 'SWITCH 1' padlock if fitted and lift up the switch slide cover to the 'unlocked' position.



2 : With the operating handle on the switch boss, rotate clockwise until the switch opens 'OFF'.



3 : Rotate the 'SELECTOR' knob anti-clockwise to 'MAIN SWITCH'.



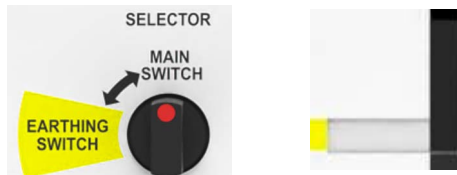
If the operator does not follow the correct operating procedure whilst operating either mechanisms there is the potential for the fail-safe facility within the handle to operate and render the operating handle useless for further operations.

 **WARNING**

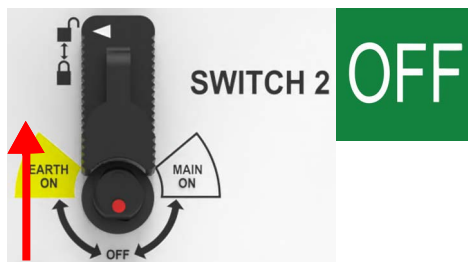
LOAD BREAK SWITCH 2 OPERATION

LOAD BREAK SWITCH 2 from 'OFF' to 'ON' ('MAIN SWITCH' selected)

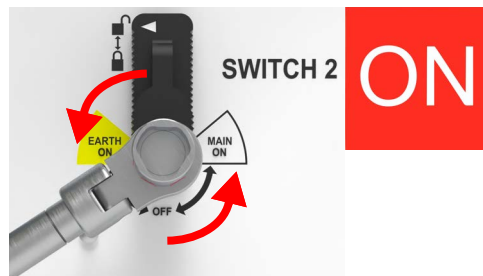
For this operation, the '**SELECTOR**' must be in the '**MAIN SWITCH**'. **Note:** Active mimic changes in accordance with the selector position.



1 : Remove '**SWITCH 2**' padlock if fitted and lift up the switch slide cover to the 'unlocked' position.

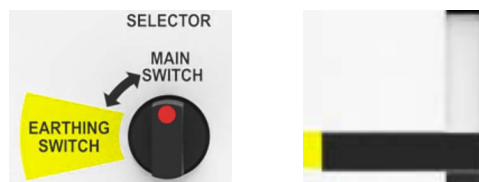


2 : With the operating handle on the switch boss, rotate anti-clockwise until the switch closes '**ON**'.

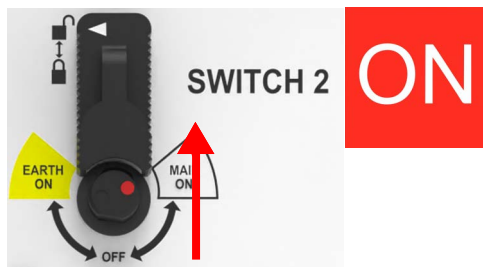


LOAD BREAK SWITCH 2 from 'ON' to 'OFF'

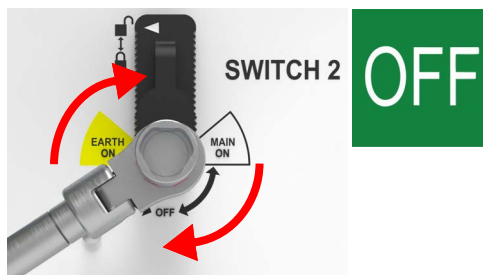
For this operation, the '**SELECTOR**' must be in the '**MAIN SWITCH**'. **Note:** Active mimic changes in accordance with the selector position.



1 : Remove '**SWITCH 2**' padlock if fitted and lift up the switch slide cover to the 'unlocked' position.



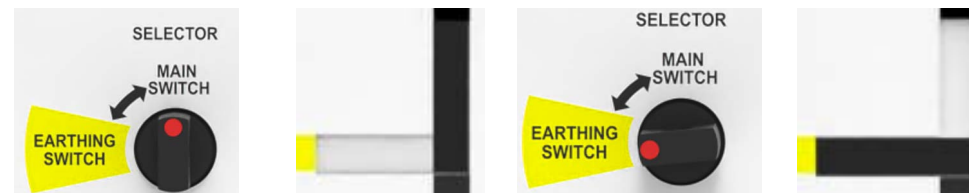
2 : With the operating handle on the switch boss, rotate clockwise until the switch opens '**OFF**'.



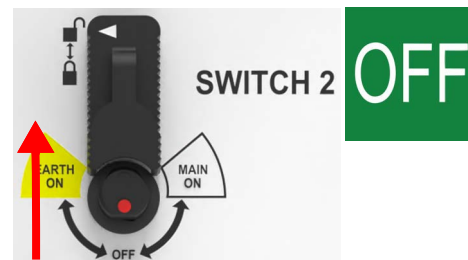
LOAD BREAK SWITCH 2 from 'OFF' to 'EARTH-ON' ('EARTH SWITCH' selected)

For this operation, the '**LOAD BREAK SWITCH 2**' must be in it's '**OFF**' position

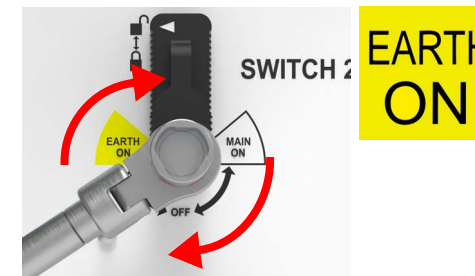
1 : Rotate the '**SELECTOR**' knob clockwise to '**EARTHING SWITCH**'.



2 : Remove '**SWITCH 2**' padlock if fitted and pull down the switch slide cover to the 'unlocked' position.



3 : With the operating handle on the switch boss, rotate clockwise until the switch closes '**EARTH-ON**'



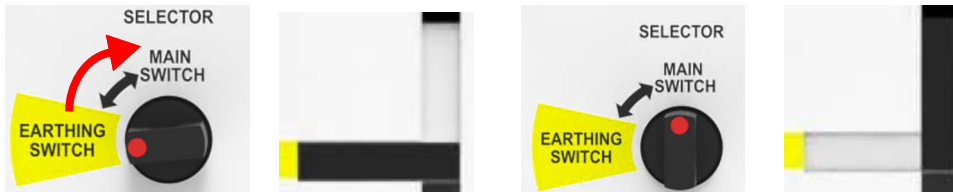
LOAD BREAK SWITCH 2 from 'EARTH-ON' to 'OFF' & 'SELECTOR' to 'MAIN SWITCH'

For this operation, the 'LOAD BREAK SWITCH 2' must be in it's 'EARTH-ON' position.

- 1 : Remove 'SWITCH 2' padlock if fitted and lift up the switch slide cover to the 'unlocked' position.
- 2 : With the operating handle on the switch boss, rotate anti-clockwise until the switch opens 'OFF'.



- 3 : Rotate the 'SELECTOR' knob clockwise to 'MAIN SWITCH'.



If the operator does not follow the correct operating procedure whilst operating either mechanisms there is the potential for the fail-safe facility within the handle to operate and render the operating handle useless for further operations.

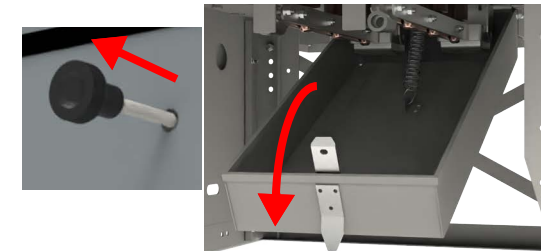
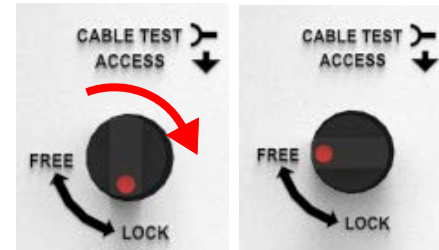
WARNING

CABLE TEST ACCESS

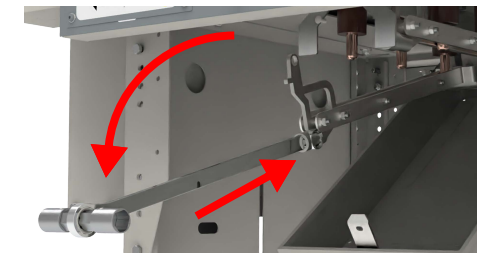
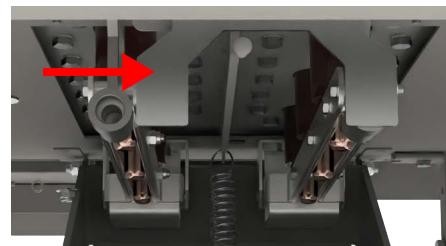
Cable Box Interlock Release For Cover Removal

For this operation the relevant 'LOAD BREAK SWITCH' is closed to 'EARTH-ON'

- 1 : Rotate the relevant Test access interlock clockwise to 'unlock'.
- 2 : Open cable test access cover by holding the test box, pulling the access knob forward, and then lower the test access cover.



- 3 : Remove padlock and move the interlock flap out of the way of the required ring switch test bushings.
- 4 : Insert the operating handle into the star point earth bar and pull down away from the bushings.



- 5 : Once star point earth bar is clear from all the bushings, remove the operating handle. Test connections can be now made onto the bushings.



! INFORMATION

With the star point earth bar removed access to operate the load break switch is prevented

Returning star point earth bar to its closed position.