

# EcoTec

## Sabre<sup>EcoTec</sup> Pure & Simple



12kV Non-SF6 Ring Main Unit  
with Synthetic Air Insulation

Better for Your Network,  
Better for Our Planet



# Contents

## Introduction to Lucy Electric

---

Commitment to innovation	6
Commitment to sustainability	8

## The EcoTec Range

---

Overview	12
Sabre <sup>EcoTec</sup> at glance	14
- Characteristics and safety features	16
- Compact design	18

## Technical Specifications

---

Dimensions	21
Standards compliance	28

## Available Options

---

Range configurations	32
Smart Grid compatibility	38
Monitoring and automation add ons	39
Options and accessories	42

# Engineering Intelligent Solutions

With over 100 people dedicated to research and innovation across two international engineering centres of excellence, we are at the cutting edge of the switchgear industry.

We never stand still. We are always working toward the next breakthrough.



100

people dedicated to research and innovation



2

international research centres



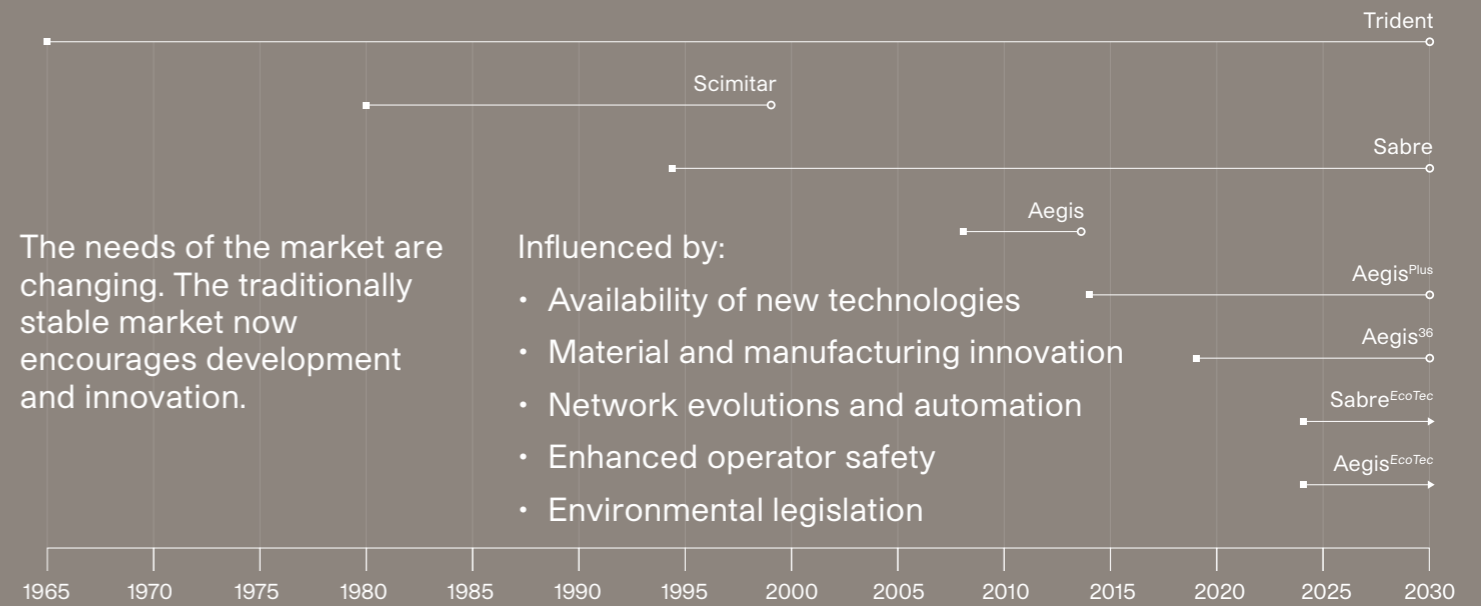
Our commitment to progress has made us a global leader in switching, protection and automation for electrical distribution. We specialise in secondary power distribution, delivering high-performance MV switchgear, overhead line equipment, and retrofit and automation solutions for utility, industrial and commercial applications worldwide.

With deep expertise and experience, we provide bespoke solutions for even the most demanding requirements, manufactured for any location, climate or situation, and backed by dedicated support throughout the product lifecycle.

# Commitment to Innovation

Lucy Electric has pioneered advancements in electrical distribution. Our legacy includes trusted product families such as Trident, Scimitar, Sabre and Aegis. Each innovation reflects our commitment to engineering excellence, customer responsiveness, and future-ready solutions.

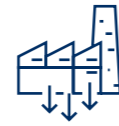
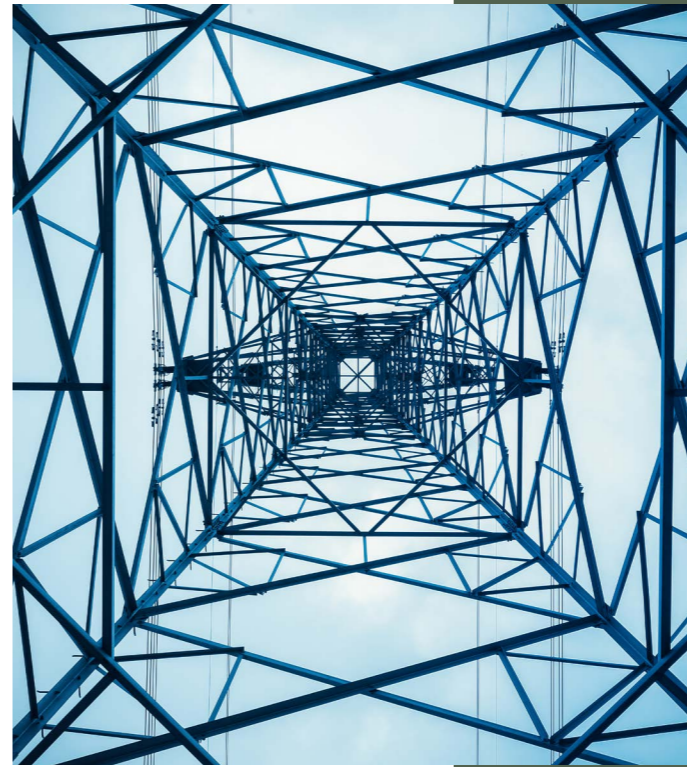
With in-house R&D and advanced manufacturing facilities, we continuously evolve to meet changing network needs, integrate smart capabilities, and exceed safety and environmental standards. As the needs of the market change, our product portfolio continues to evolve with the introduction of the *EcoTec* range.



## Our range of RMUs includes

- Full range of insulated mediums for transformer or ground mounted secondary applications
- All RMUs are suitable for both indoor and outdoor installations
- Front and lateral cable termination options to cater to varied market needs
- Up to 38kV offering a complete power distribution solution

Ring Main Units	Rated Voltage	Mode of Fault Current Interruption	Insulation Medium	Mounting	Cable Access
Aegis <sup>36</sup>	up to 38kV	Vacuum	SF6	Ground	Front
Aegis <sup>EcoTec</sup>	12kV/24kV	Vacuum	Synthetic Air	Ground	Front
Aegis <sup>Plus</sup>	up to 24kV	Vacuum	SF6	Ground	Front
Sabre <sup>EcoTec</sup>	12kV/17.5kV	Vacuum	Synthetic Air	Ground/ Transformer	Lateral/Rear
Sabre	12kV/24kV	Vacuum	SF6	Ground/ Transformer	Lateral/Rear
Trident	15.5kV	Fuse	Oil	Ground/ Transformer	Lateral/Rear



4.2%

We are committed to reducing our greenhouse gas emissions by 4.2% annually.



2050

As a business, we are driving forward Net-Zero by 2050.

# Commitment to Sustainability

In an industry racing to meet Net-Zero targets, sustainability must be more than words on a page. At Lucy Electric, we believe in harnessing our business as a force for good.

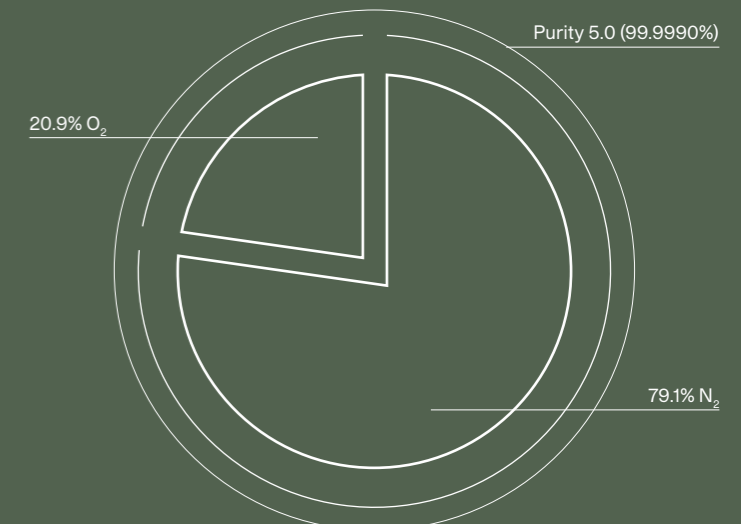
We are creating and delivering a sustainability culture across our business and the communities in which we operate, with a focus on education, training, and wellbeing for everyone.



*EcoTec* perfectly reflects our dedication to sustainable business. We've taken our market-leading MV RMU range and made it even better—for you, for the planet, and for everyone.

With a GWP of zero, Synthetic Air is the ideal choice of dielectric for the *EcoTec* range. It's purer than the air we breathe.

Obtainable globally, Synthetic Air is 79.1% nitrogen and 20.9% oxygen, with a purity of 5.0 (99.9990% pure). The *EcoTec* range has been intentionally designed to be compact while optimising electrical performance at low gas pressure.





## The *EcoTec* Range

# A Breath of Fresh Air for Electrical Distribution

The *EcoTec* range is our next-generation solution, developed to meet the rising demand for safer, smarter, and more sustainable switchgear. Engineered for both retrofit and new installations, *EcoTec* delivers exceptional reliability, advanced automation options, and complete SF6 elimination without compromising performance or footprint.

It's the future of MV switchgear.

Reflecting our established product family, the *EcoTec* range maintains the same innovative design and core technology as our international Ring Main Unit applications and installations, with both transformer mounted and freestanding versions available.



The *EcoTec* range represents our latest innovation and a leap forward in sustainable technology.

Designed to meet the growing demand for environmentally responsible solutions, the *EcoTec* range combines cutting-edge technology with enhanced operator safety, network evolution, and automation capabilities – with features that align with evolving network needs and stringent environmental legislation.

Our *EcoTec* range provides a future-proof solution that not only meets today's demands but also anticipates tomorrow's challenges.

# Sabre<sup>EcoTec</sup>

The Sabre<sup>EcoTec</sup> delivers all the benefits of carbon Net-Zero, without the negatives of a larger footprint, or a drop in performance.



We have combined our international experience, insights and customer feedback with the latest technology and manufacturing techniques.

In short, Sabre<sup>EcoTec</sup> offers the same outstanding performance and applications as our existing Sabre MV RMU range, but with greatly improved environmental credentials.

## Benefits

---

Synthetic Air Insulating Medium with Global Warming Potential of Zero

---

Internal arc performance for operator safety

---

A-FLR 20kA, 1 second performance for tank

---

A-FLR up to 20kA, 1 second for cable boxes available as an option

---

Extensive range of protection options

---

Time Limit Fuses (TLF) & Self-powered IDMT protection options

---

Truly outdoor unit IP54 without a kiosk

---

Integrated cable earth and test facility

---

Intuitive single line mimic

---

Embedded RTU for SMART applications

---

Clear and simple operation

---

# Characteristics and Safety Features

## Unique Features, Innovative Solutions

12kV, 95kV BIL rating

Three functions in a single enclosure Synthetic Air insulated stainless-steel tank

Intuitive single line mimic diagram for simple and safe operation

Freestanding and direct transformer mounting options minimised cable works with package substation solutions

Vacuum circuit breaker enclosed in Synthetic Air for extra protection

Embedded motorisation behind fascia for enhanced operation and control

Integrated cable testing facility for all switches and optional circuit breaker

Embedded RTU within the unit and an optional RTU for SMART installations and applications

Suitable for indoor and outdoor applications - IP41 and IP54 available

## Sustainable, Reliable, Efficient

Safe

Environmentally friendly

Cost effective

Small footprint

Easy to install

Simple operation

Virtually maintenance-free

Climate independent

SMART automation ready

Embedded RTU

## Advanced Safety, Made Easy

Interlocked operating mechanism

Anti-reflex mechanism

Interlocked cable boxes available

Internal arc withstand for gas tank and cable compartments

Self-powered IDMT relay protection options

Fault passage indication and earth indication available

Wide range of VPIS/VDS solutions

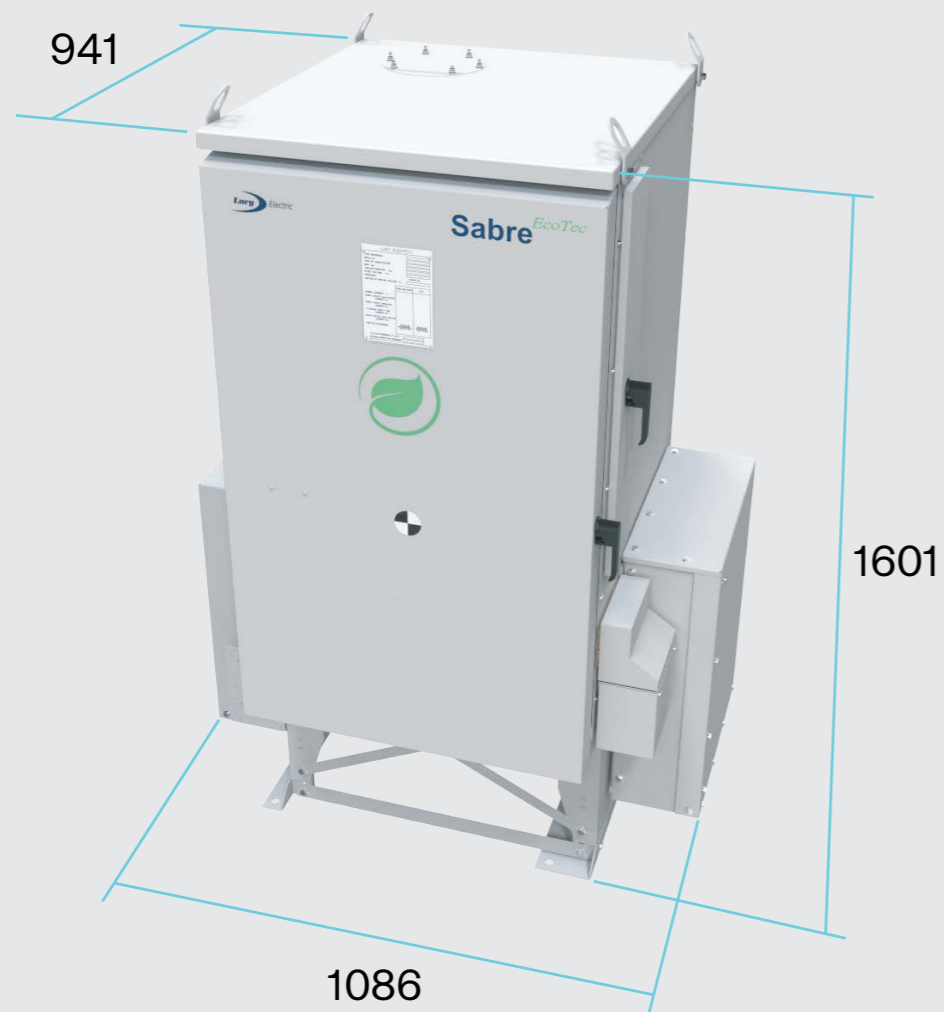
Gas pressure indicator

Remote low gas pressure alarm



# Small and Perfectly Formed

The Sabre<sup>EcoTec</sup> range is designed to be smaller and more efficient, while maintaining compatibility with standard installation requirements. As a result, the *EcoTec* range provides the same set of solutions for substations as conventional equivalents, but in an optimised package.



Sabre <sup>EcoTec</sup>	Width (mm)	Depth (mm)	Height (mm)
non-extensible	1086	941	1601

## The Numbers

Sabre <sup>EcoTec</sup>		12kV	
Rated Voltage	kV		12
Rated Frequency	Hz		50
Rated Impulse Withstand Voltage	kV		95
Short Time Withstand Voltage	kV		38
Short Time Withstand Current	kA		20
Rated Duration of Short Circuit	seconds		3
Short Peak Withstand Current	kA		52.5
Internal Arc Classification			A-F / A-FL / A-FLR
Internal Arc Rating	Tank	kA 1second	20
	CableBox	kA 1second	13.5 / 20
Ingress Protection	Outdoor	IP	54
	Indoor	IP	41
Temperature Range	°C		-25 to +40
Maximum Relative Humidity	%		100

## Circuit Breaker Function

Rated Normal Current	VRN2e	A	250
	VRN6e	A	630
Mechanical Endurance		Class	M1
Electrical Endurance		Class	E2

## Load Break Switch

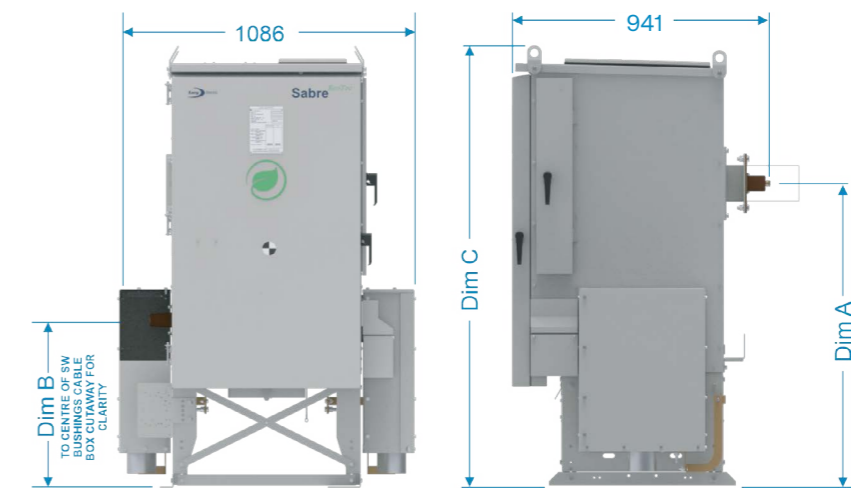
Rated Normal Current		A	630
Mechanical Endurance		Class	M1
Electrical Endurance		Class	E3



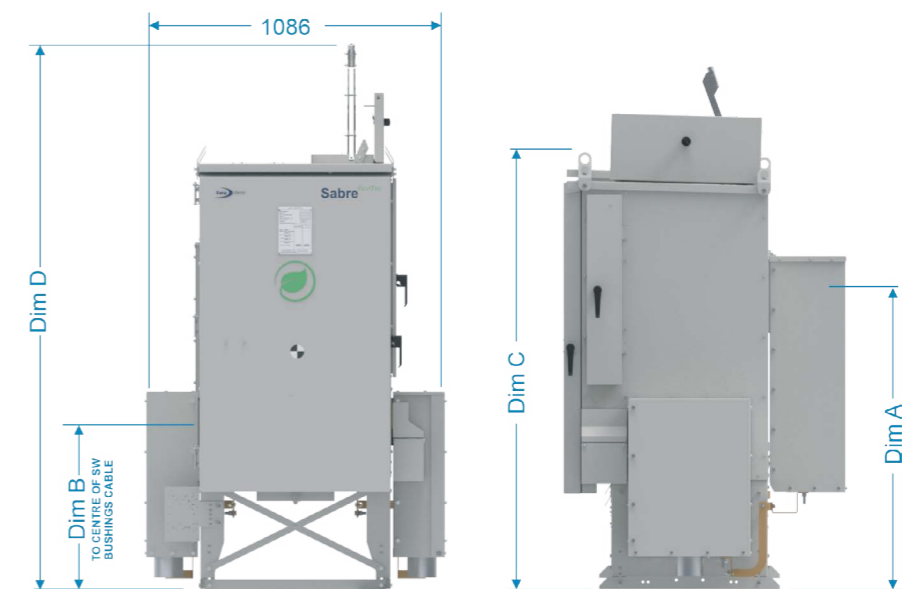
The Sabre<sup>EcoTec</sup> Range

Dimensions

Dimension A (Tee Off Bushing Height)	Dimension B	Dimension C	Dimension D
1402mm	909mm	1903mm	2282mm
1320mm	827mm	1821mm	2200mm
1100mm	607mm	1601mm	1980mm



VRN2e



VRN6e

# Technical Specifications

## Models & Options

Configuration	Ring Main Units		
	Non-Extensible	VRN2e	VRN6e
630A Load Break Switch	x2	x2	
250A Circuit Breaker	x1	-	
630A Circuit Breaker	-	x1	
<b>Extensibility</b>			
Non Extensible	✓	✓	
RH Extensible (viewed from front)	-	-	
LH Extensible (viewed from front)	-	-	
<b>General</b>			
12kV 50Hz	✓	✓	
17.5kV 60Hz	0	0	
Go-No-Go Pressure indicator	✓	✓	
Temp. Compensated Pressure Gauge	0	0	
DILO Top-Up Filler Coupling	✓	✓	
Low Gas Pressure Alarm	0	0	
<b>Mounting Arrangement</b>			
Transformer Mounted (fitted with ESI Flange)	✓	-	
Free Standing (ESI Flange and Cable Box)	0	0	
Free Standing (Cable Box only)	0	✓	
<b>Tee off Bushing Height</b>			
1100mm	0	-	
1320mm	0	0	
1402mm	0	0	
<b>Internal Arc Classification</b>			
<b>Tank</b>			
A-F, 20kA, 1 second	✓	✓	
A-FL, 20kA, 1 second	✓	✓	
A-FLR, 20kA, 1 second	0	0	
Ring Switch Cable Box			
A-F, 13.5kA, 1 second	✓	✓	
A-FL, 13.5kA, 1 second	✓	✓	
A-FLR, 20kA, 1 second	0	0	
<b>Circuit Breaker</b>			
<b>Bushings</b>			
Parallel Bushings	✓	✓	
Type C Profile	0	0	
Type C Combi Sensor bushings	0	0	
Thread Size M16	✓	✓	
Thread Size M12	0	0	

Configuration	Ring Main Units		
	Non-Extensible	VRN2e	VRN6e
<b>Rated Load Current</b>			
250A	✓	0	
630A	0	✓	
<b>Cable Test Access</b>			
On RMU lid	-	✓	
<b>Protection</b>			
TLF	0	-	
IDMT Relay - Fanox	0	0	
IDMT Relay - Woodward	0	0	
IDMT Relay - Other	0	0	
<b>Protection CT's</b>			
100/50/-	0	0	
600/200/-	0	0	
400/200/-	0	0	
200/100/-	0	0	
150/100/-	0	0	
<b>Remote Shunt Trip Coil</b>			
Multi-Tap 24V - 240V AC/DC			
<b>Auxiliary Switches</b>			
<b>Circuit Breaker Service Indication</b>			
1 x N/O, 1 x N/C	0	0	
2 x N/O, 2 x N/C	0	0	
<b>Circuit Breaker Earth Indication</b>			
1 x N/O, 1 x N/C	0	0	
2 x N/O, 2 x N/C	0	0	
Tripped On Fault Indication	0	0	
Motor Enabled Indication	0	0	
<b>Motorisation</b>			
No Provision	✓	✓	
Provisional Wiring Only	0	0	
Integral 24V DC Motor and Wiring	0	0	
Integral 24V DC Motor and Wiring (sub 3 sec)	0	0	
<b>Local Indication</b>			
<b>VDIS</b>			
None	✓	✓	
Pfisterer Sockets	0	0	
Horstmann WEGA 1	0	0	
Mechanical Operations Counter	0	0	

Key:  
Standard: ✓  
Optional: 0

Configuration	Ring Main Units		
	Non-Extensible	VRN2e	VRN6e
<b>Load Break / Ring Switch(es)</b>			
<b>Bushings</b>			
Type C profile	✓	✓	
Type C Combi Sensor bushings	0	0	
Thread Size M16	✓	✓	
Thread Size M12	0	0	
<b>Rated Load Current</b>			
630A	✓	✓	
<b>Cable Test Access</b>			
On Bottom of RMU	✓	✓	
<b>Auxiliary Switches</b>			
1 x N/O, 1 x N/C	0	0	
2 x N/O, 2 x N/C	0	0	
3 Pole On/Off/Earth	0	0	
<b>Motorisation</b>			
No Provision	✓	✓	
Provisional Wiring Only	0	0	
Integral 24V DC Motor and Wiring	0	0	
Integral 24V DC Motor and Wiring (sub 3 sec)	0	0	
<b>Local Indication</b>			
<b>VDIS</b>			
None	✓	✓	
Pfisterer Sockets	0	0	
Horstmann WEGA 2	0	0	
Mechanical Operations Counter	0	0	
<b>Earth Fault Indication</b>			
None Fitted	✓	✓	
Main Powered	0	0	
Self Powered	0	0	
Battery Powered	0	0	

Key:  
Standard: ✓  
Optional: 0

# Air Metering Unit (AMU)

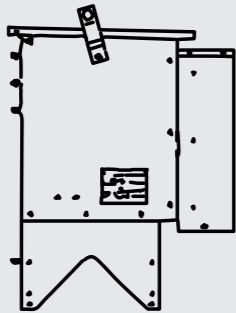
# AMU (Freestanding)

### Characteristics

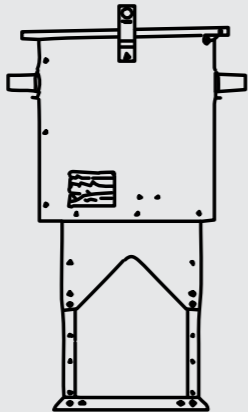
- Up to 15.5kV and 630A rating
- Freestanding and RMU mounted versions
- Voltage transformer (VT) isolation for HV testing
- Busbar metering and tee-off metering options
- Trip lock out relay for RMU/AMU combinations for emergency tripping
- Wide range of CT and VT options to suit various application needs
- IP54 for outdoor installation without needing a kiosk



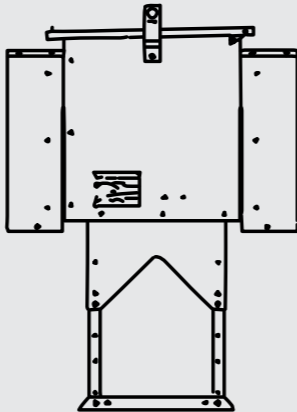
### Mounting Style



Tee-off metering

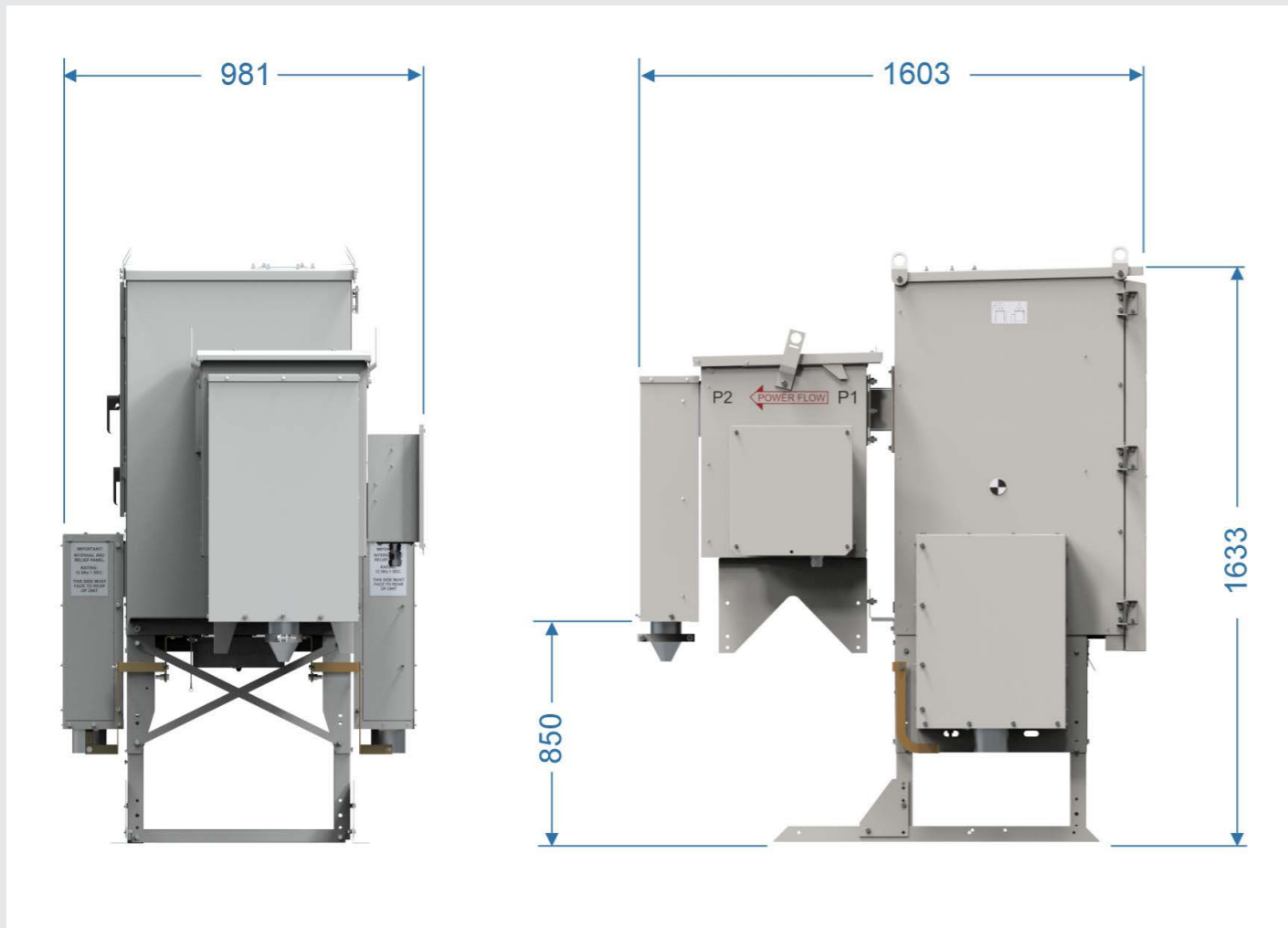


Busbar connected (BC)



Freestanding metering (FS)

# Tee-Off AMU (RMU Mounted)



## Options & Accessories

Metering Units		
General		
Impulse withstand voltage (BIL) kVP (choose one from below)		
12kV at 75kVP BIL		0
15.5kV at 95kVP BIL		0
Rated Current		
250A		0
630A		0
Mounting Style		
Freestanding (FS)		0
Busbar Connected (BC)		0
Ring Main Unit (Tee-Off) Mounted (TC)		0
Bushings type		
Freestanding (FS)		
Incoming DIN type C		✓
Outgoing DIN type C		✓
Busbar Connected (BC)		
Incoming DIN type C		✓
Outgoing DIN type C		✓
Ring Main Unit (Tee-Off) Mounted (TC)		
Incoming DIN type C		✓
Outgoing DIN type C		✓
Voltage Transformer (VT)		
VT primary fused protection		
Unfused primary VT with tool-free busbar isolation for VT testing (only for 630A)		0
Fused primary VT		0
VT Type	Number of VTs	
Dual ratio (Primary) 3 Phase - 5 limb, Ratio: 11000/6600/110v, Class 0.5, 20VA/PH 1 O	1	0
Single ratio (Primary) 3 Phase - 5 limb, Ratio: 11000/110v, Class 0.5, 50VA/PH 1 O	1	0
Dual ratio (Primary) 3 Phase - 5 limb, Ratio: 11000/6600/110v, Class 0.5, 50VA/PH	1	0
Single ratio (Primary) 1 Phase - 1 limb 13800/110V, class 0.5, 50VA/PH	2	0
	3	0
	2	0
Dual ratio (Primary) 1 Phase - 1 limb 11000/6600/110V, class 0.2, 50VA/PH	3	0
	1	0
Dual ratio (Primary) 3 Phase - 5 limb, Ratio: 11000/6600/110v, Class 0.5, 50VA/PH	1	0
Dual ratio (Primary) 3 Phase - 5 Limb, Ratio: 11000/6600/110v, Class 0.5, 20VA/PH	1	0
Single ratio (Primary) 3 Phase - 5 Limb, Ratio: 11000/110v, Class 0.5, 50VA/PH	1	0
Dual ratio (Primary) 3 Phase - 5 Limb, Ratio: 11000/6600/110v, Class 0.5, 50VA/PH	1	0

Key:  
Standard: ✓  
Optional: 0

# Standards

**IEC  
62271-100**

Circuit breaker

**IEC  
62271-102**

Ring earth switch

**IEC  
62271-103**

Ring switch

**IEC  
62271-200**

Enclosure

**IEC  
62271-206**

Voltage Presence  
Indication System

**IEC  
61243-5**

Voltage Detection System

**IEC  
60255**

Relays

**IEC  
62271-1**

Common specification  
for switchgear



## Available Options

Non-Extensible RMU

# Options for All Secondary Applications

### VRN2e

250A tee-off Circuit Breaker available with:

- Time Limit Fuse (TLF) protection
- IDMT relay protection
- Interlocked cable test access for both ring switches

### VRN6e

630A tee-off Circuit Breaker available with:

- IDMT relay protection
- Interlocked cable test access for both ring switches and the tee-off circuit breaker

**VRN2e**  
Two 630A Ring Switches with a 250A tee-off circuit breaker

**VRN6e**  
Two 630A Ring Switches with a 630A tee-off circuit breaker

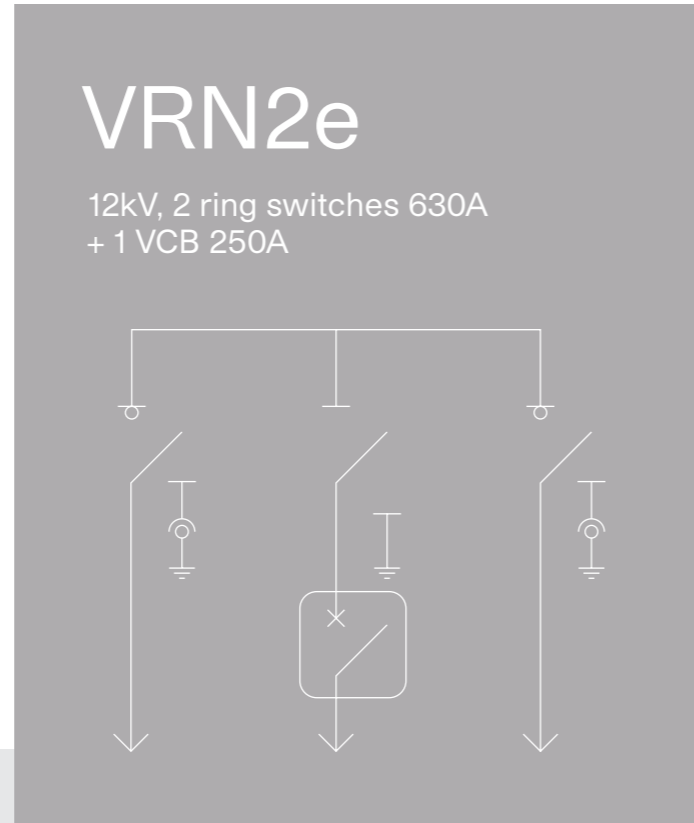


Key:  
 Vacuum Circuit Breaker: V  
 Ring Main Unit: R  
 Non-Extensible: N  
 250A tee-off circuit breaker: 2  
 630A tee-off circuit breaker: 6  
 EcoTec, Synthetic Air insulation: e

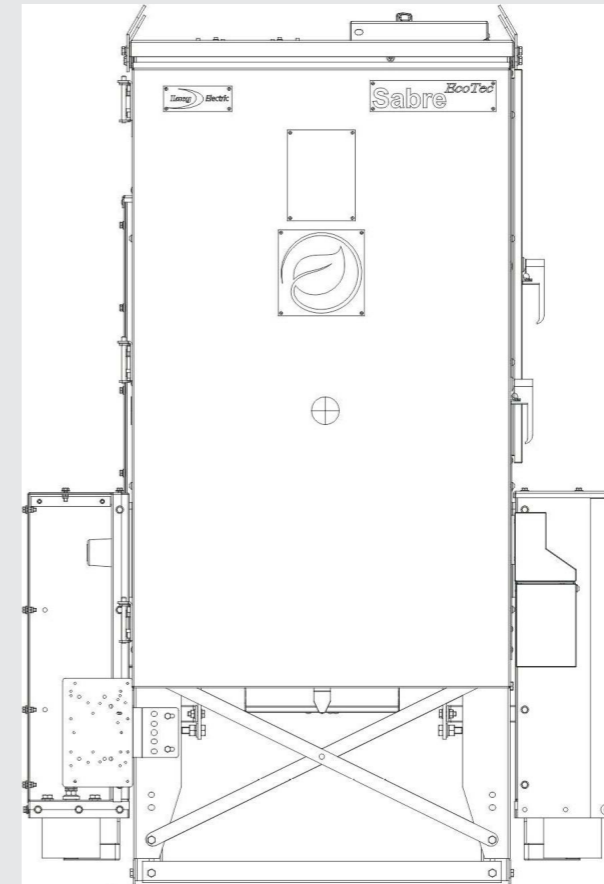
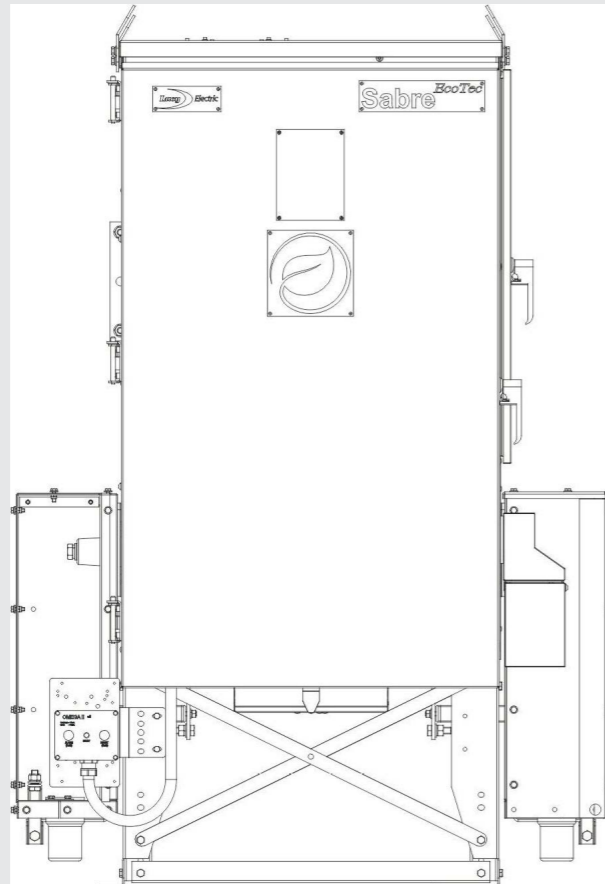
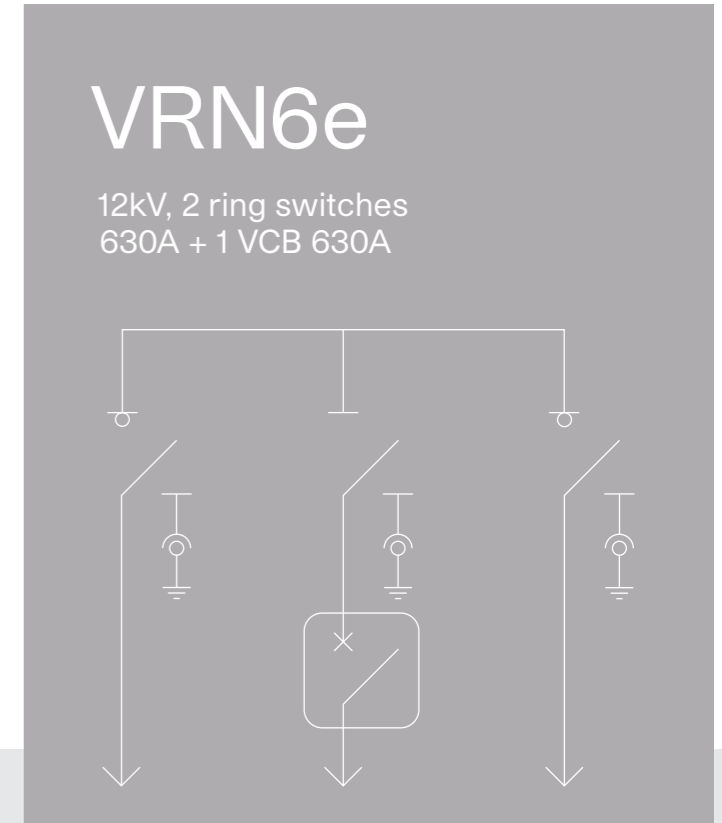
The Sabre<sup>EcoTec</sup> Range

# Non-Extensible Range

Non-extensible ring main units are an ideal solution for compact outdoor substations. Along with low voltage distribution cabinets, these units can be easily coupled to the distribution transformer, forming a compact outdoor package substation.



Modular non-extensible ring switches are an ideal solution for making a switching point in the network.



# Smart Efficiency, Outstanding Results

With the automation of secondary distribution networks becoming an international requirement, automation is embedded as standard in the Sabre<sup>EcoTec</sup> range.

From behind-the-fascia solutions for motors to behind-the-door solutions for the remote terminal unit (RTU), Sabre<sup>EcoTec</sup> delivers efficient and compact solutions for every application.

Combined with our GridKey range of sensors, monitoring and analytics, Sabre<sup>EcoTec</sup> brings you the automation of the future, today.

1. Load Break Switch Operation Collar
2. Load Break Switch Main/Earth Selector
3. Load Break Switch Cable Test Interlock
4. Load Break Switch Selector Indication Window
5. Load Break Switch Position Indication Window
6. Circuit Breaker Operation Collar
7. Circuit Breaker Disconnect Collar
8. "Push-to-trip" Button
9. Circuit Breaker Disconnect Indication Window
10. Circuit Breaker Position Indication Window
11. Gas Top Up Valve
12. Pressure Indicator
13. Time Limit Fuse Protection
14. Load Break Cable Test Access





Smart Grid Ready-Embedded RTU

# Smart Grid Ready

Smart RMU-Embedded RTU

# Remote Access & Monitoring

## Master Control Module

- Dual Ethernet Ports
- 2x RS232 Ports
- RS485 Port
- USB Port
- Internal SD Memory Card
- Port for Optional HMI
- Dummy Control



Embedded

## Master Protocols

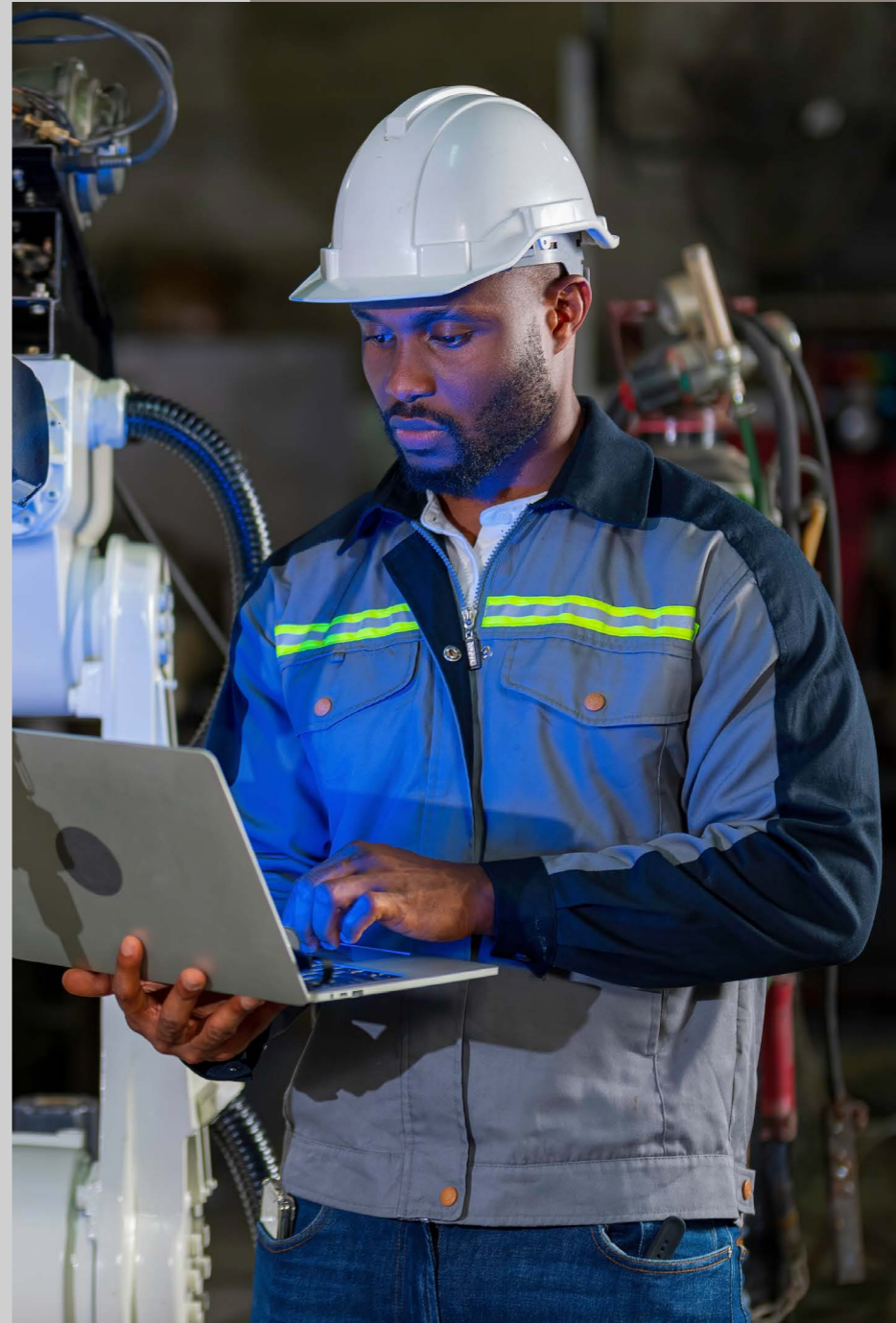
- IEC 60870-5-101 / 104

## Slave Protocols

- Modbus



Standalone



Our RTU collects real-time data from sensors in the RMU, which operators can monitor and control remotely from a central location or mobile device, offering improved operational efficiency, reliability, safety and cost savings.

Smart Grid Ready-  
Embedded RTU

# Networks That Work Smarter, Not Harder

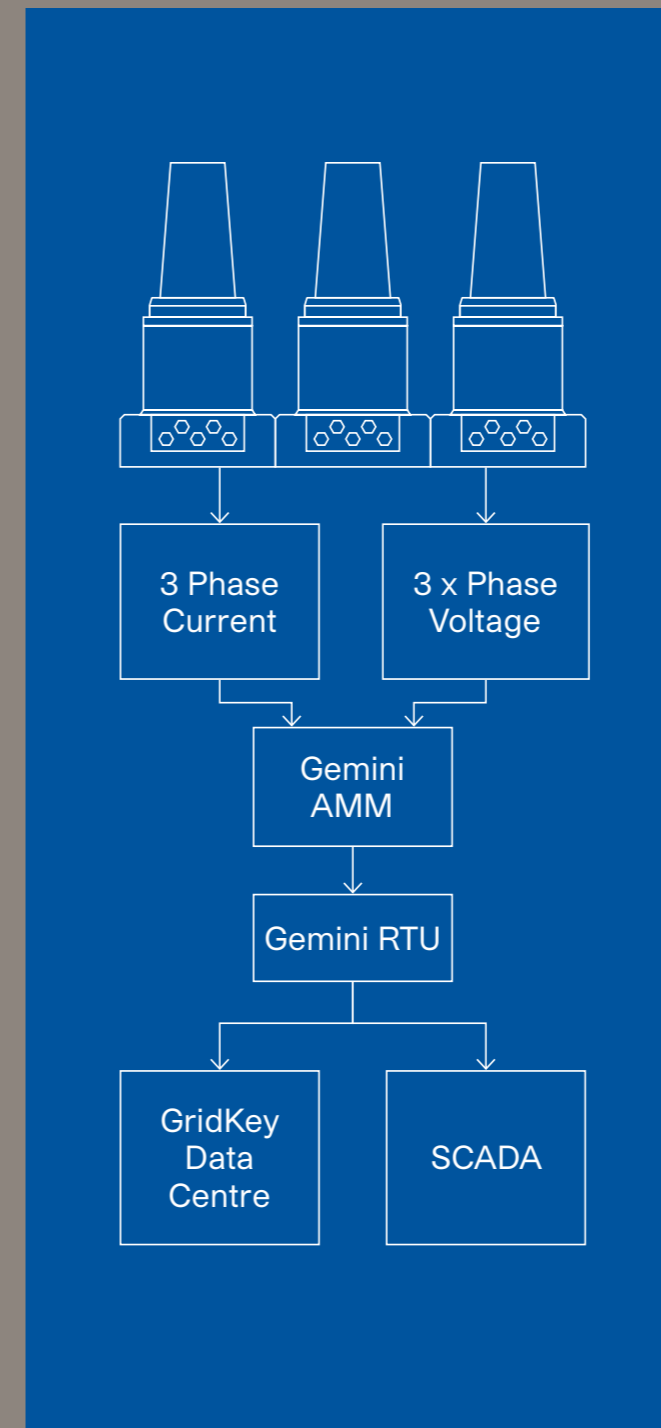
Our Smart RMU  
Embedded Sensors  
increase reliability,  
operational efficiency,  
and safety in your  
distribution network.

### Features & Benefits

- Real-time monitoring
- Predictive maintenance
- Enhanced control
- Data integration



# Smart RMU Combo Sensors



### Network condition monitoring

- Tariff Class
- Voltage
- Current
- Power: active, reactive and apparent power
- Power factor
- Frequency

### Load flow monitoring

- Maximum load
- Minimum load
- Mean values





## Options and Accessories

# Simple Efficiency and Versatility

TLF: Time Limit Fuses for over-current and earth fault protection

Simple and low-cost solution when compared to relay protection

Complete range of current settings within one standard design

Used with transformers from 330kVA to 1.6MVA ratings

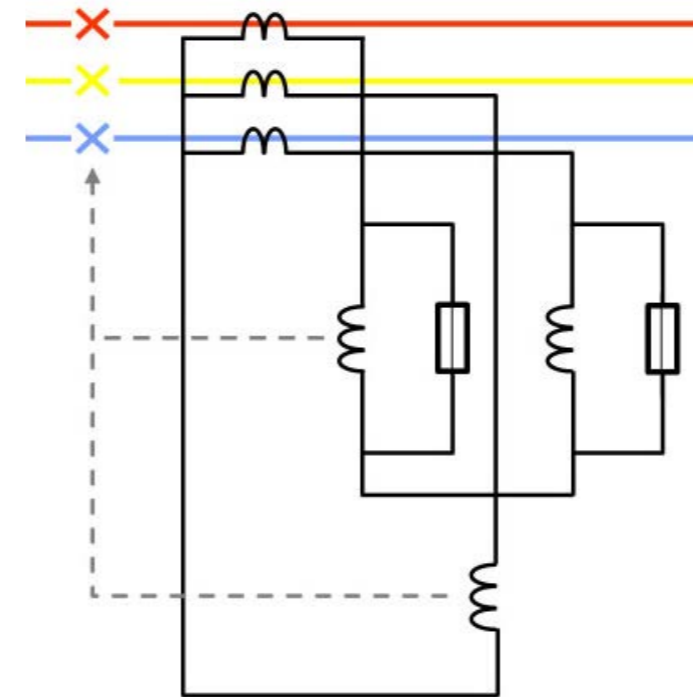
Low-cost circuit breaker protection



Protection  
Secondary Injection

# Relay Testing Simplified

- Available on circuit breaker function
- Used to test TLF/ Relay operation without applying high voltage to the unit
- Test voltage (low voltage) is applied to the Protection CT secondary winding
- No disconnection of wiring is required
- Dedicated terminal connection is provided in the LV compartment for testing
- Real-time fault diagnostics
- Real-time protection



- Small fuse with shunted AC solenoids give a Direct Acting Trip (DAT) on the breaker
- Protection provides:
  - Fuse graded 2 phase overcurrent protection
  - Instantaneous or graded earth fault protection
- Cost effective way to use circuit breaker protection without the expense of a relay

IDMT Protection Relays

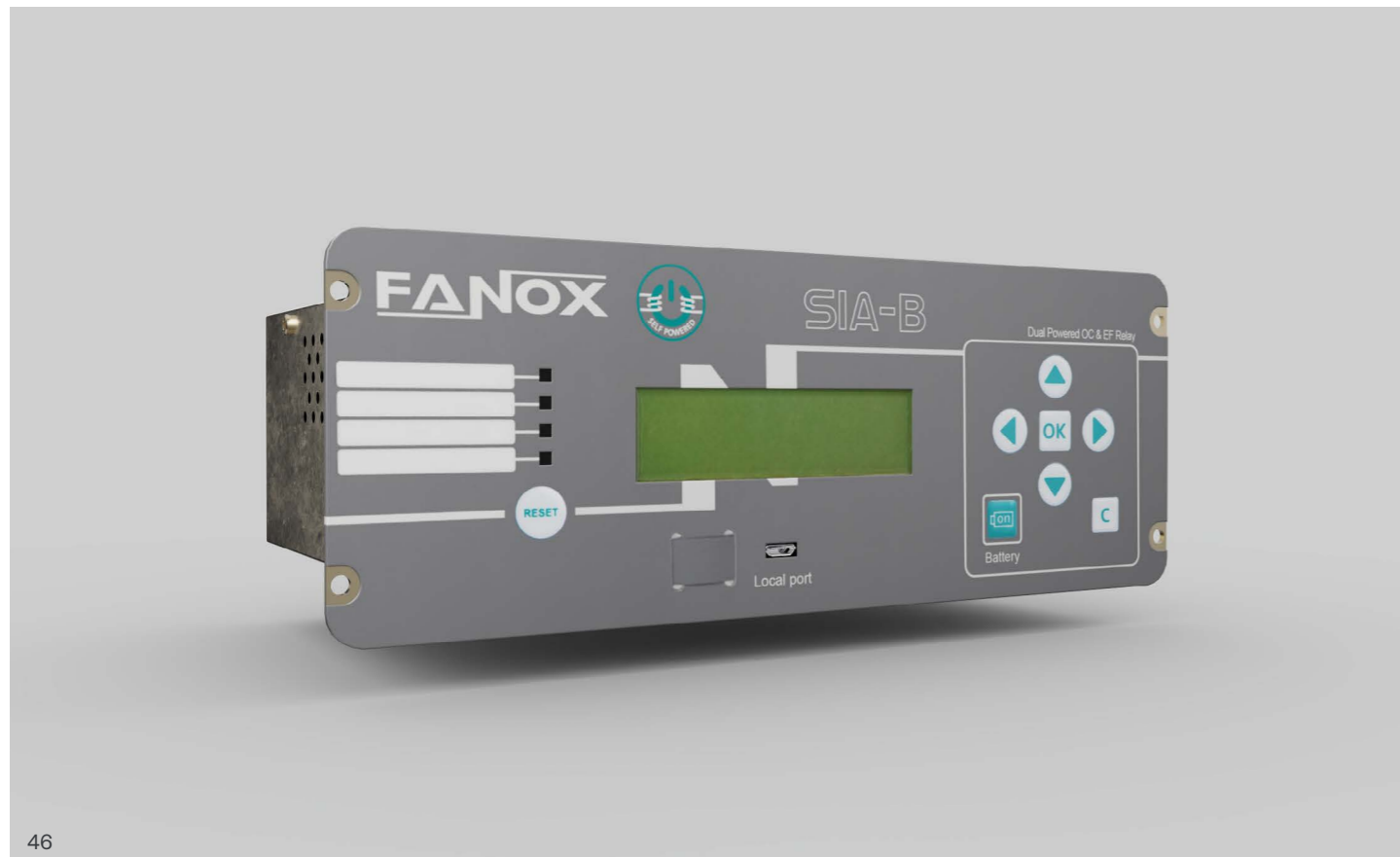
# Real-Time Fault Diagnostics and Fast-Response Protection

Features

- Short circuit and overcurrent protection
- Dual and self-powered for greater operational assurance
- Earth fault and thermal overload protection
- Circuit breaker and remote tripping
- Tripping indication and fault recording
- Measurement of fault currents
- Multiple I/O for diverse applications
- Modbus protocol support
- Digital display and LED indication
- Password protection

Benefits

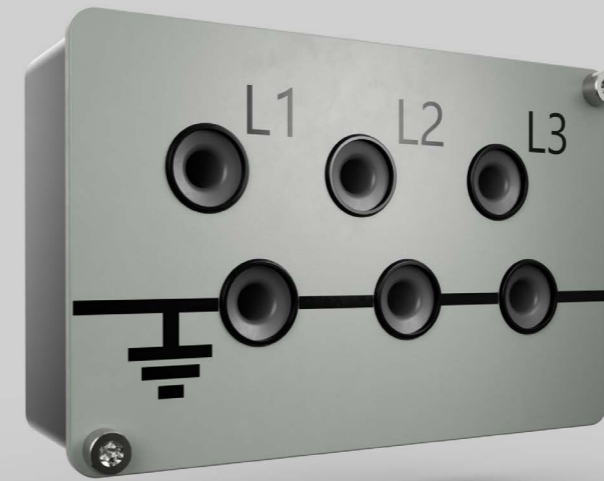
- Reduced fault time with detailed diagnostics
- Wide range of transformers supported
- Fast response protection of MV networks
- Support for diverse industrial applications
- Improves reliability of circuit breaker
- Simple operation with minimal maintenance



Voltage Indication and Detection Systems

# Precision Monitoring for Critical Systems

Pfisterer Sockets



Voltage indication VPIS / VDS

- Voltage Presence Indication System
- Voltage Detection System
- Other manufacturers available

Load Break Switch Auxiliary contacts

- Load break switch position
- Earth switch position

Vacuum Circuit Breaker Auxiliary contacts

- Vacuum circuit breaker position
- Vacuum circuit breaker switch disconnecter position
- Earth switch position
- Striker operation (tripping by self-powered relay)

Horstmann



Kries Capdis



Cable Test Access

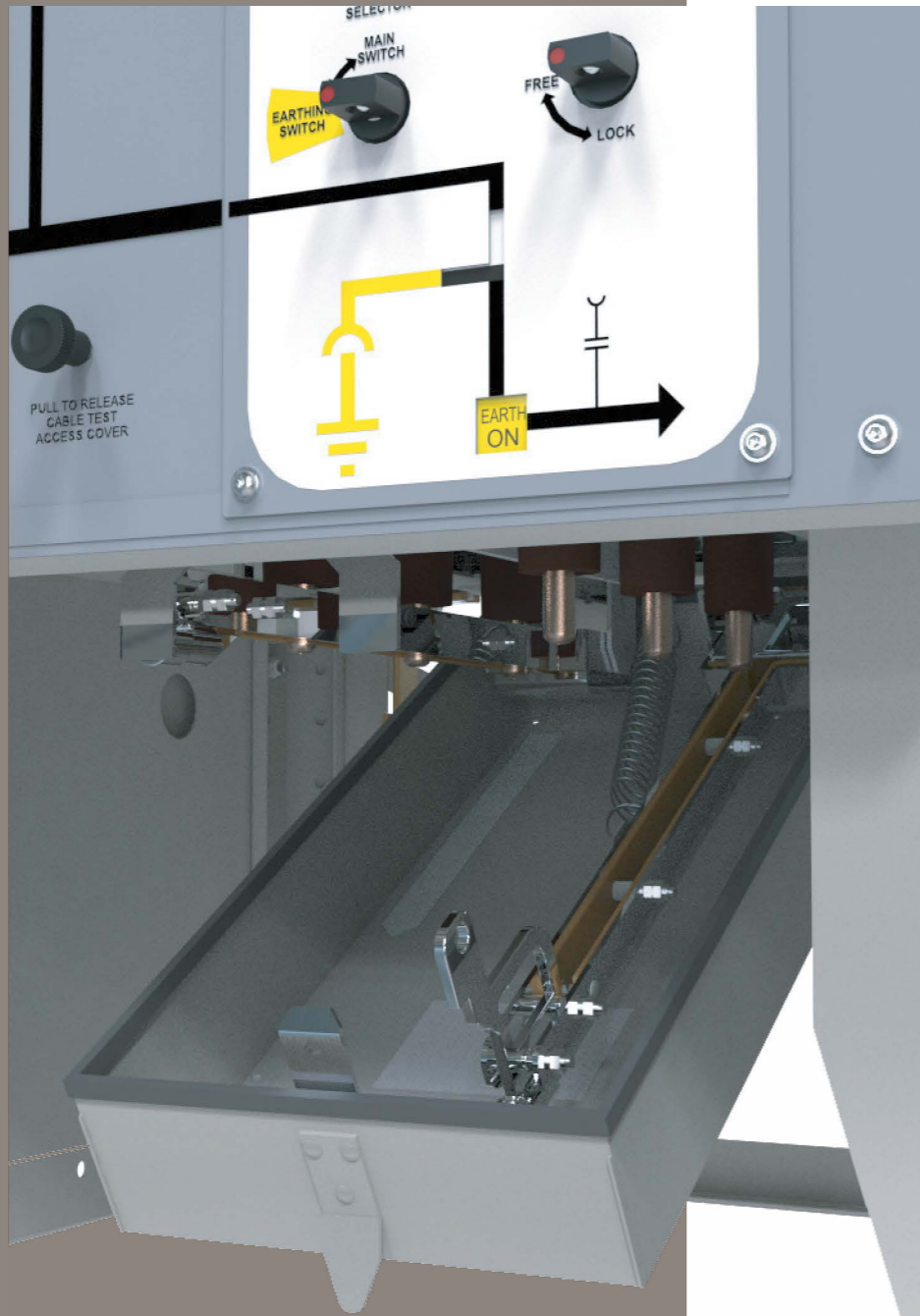
# Simplified Safety, Built In

Available on Ring Switches as standard and on the 630A circuit breaker

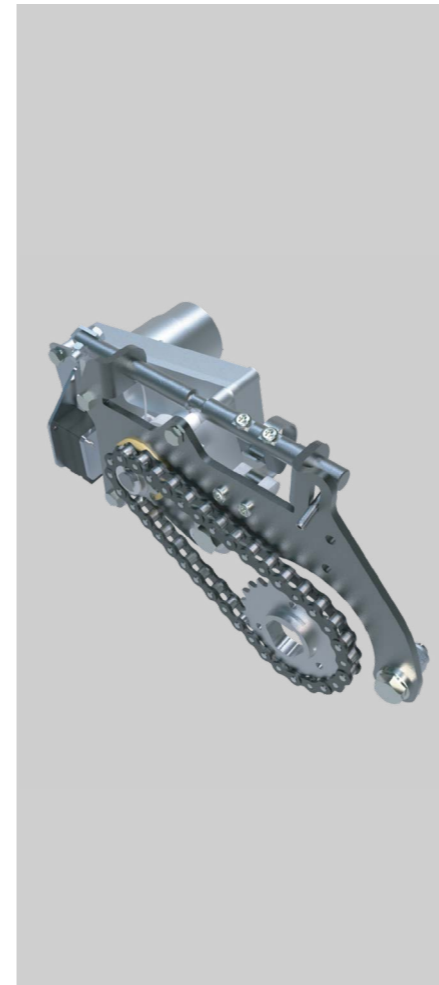
Cable test bushings for simple and safe cable testing – no need to open the cable compartment

Fully Interlocked cable test access cover with integral star bar

The cable test access cannot be opened until the switch/circuit breaker is locked into earthed position

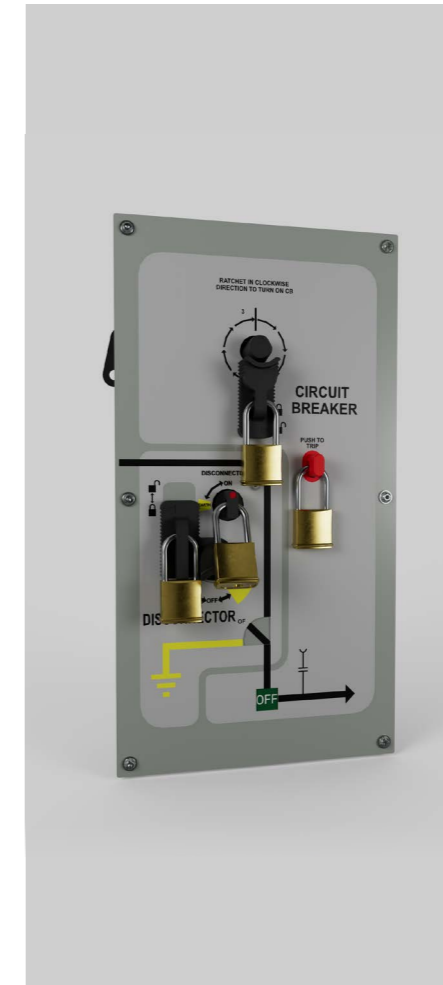


# Other Accessories



### Actuators

- Integrated behind the fascia
- 24V DC motors
- Power backup from 24V RTU battery in case of mains failure



### Padlocks

- 10mm diameter hole for padlocks for all functions



### Operation Counters

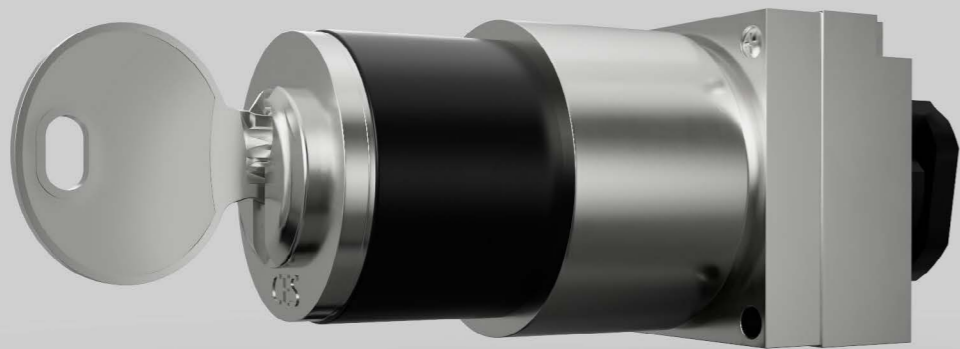
- Load break switch mechanism
- Vacuum circuit breaker mechanism

Key Interlocks

# Reliable Key Lock Solutions

## Mechanical Key Interlocks

- Castell key locks
- Exchange boxes available



Cable Terminations

# Cable Connectors & Bushings for All Applications



## Cable Connectors

- Screened elbow connector
- Screened elbow double connector
- Heat shrink connectors
- Rubber boots
- Bushings

DIN 400 Type C -  
125mm Phase Centre



Surge Arrestors

# Safeguard Your Network

Our surge arrestors play a crucial role in protecting your equipment from electrical surges, ensuring reliable operation and extending the lifespan of your switchgear.





## Our offices:

Lucy Electric:  
Howland Road  
Thame  
Oxfordshire  
OX9 3UJ. United Kingdom  
t: +44 (0) 1844 267267  
f: +44 (0) 1844 267223

Lucy Electric Digital  
Solutions Ltd:  
Howland Road  
Thame  
Oxfordshire  
OX9 3UJ. United Kingdom  
t: +44 (0) 1268 850000

Lucy Electric Digital  
Solutions Ltd:  
8 Argent Court  
Sylvan Way  
Southfields Business Park  
Basildon  
Essex SS15 6TH  
t: +44 (0) 1268 968922

Lucy Electric Digital  
Solutions Ltd:  
607 Delta  
Welton Road  
Swindon  
SN5 7XF  
t: +44 (0) 1268 850000

Lucy Middle East FZE:  
N400 Road, JAFZA North,  
Plot MO 0161, P.O. Box 17335,  
Jebel Ali, Dubai, UAE  
t: 04-8129999  
f: 04-8129900

Lucy Switchgear (FZE):  
PO Box 17709, Plot No:  
M00409, Jebel Ali Free  
Zone, Dubai  
United Arab Emirates  
t: +971 @ 8080333 ext. 6261  
f: +971 @ 8080444

Lucy Electric India Private Ltd:  
Zone South Sales Office 79/2,  
City Centre, 4th Floor  
Hennur-Bellary Outer Ring  
Road, Opp. Hebbal BMTC  
Bus Depot, Bangalore -  
560024 Karnataka, India

Lucy Electric India Private Ltd:  
F-10, MIDC  
Ambad  
Nasik 422010  
India  
t: +91 253 2381603

Lucy Electric Manufacturing  
& Technologies Private Ltd:  
R.S. No: 26-30, Village  
Noorpura Post : Baska  
besides Polycab, Halol  
Baroda Toll Road, Taluka  
Halol, District: Panchmahal,  
GUJARAT 389350. India  
tel/fax: +91 2676 304901/2

Lucy Electric India Private Ltd:  
2B - 46 & 47, 2nd Floor,  
Phoenix Paragon Plaza  
LBS Marg, Kurla West  
Mumbai 400070  
Maharashtra, India  
t: +91 22 62366616

Lucy Electric India Private Ltd:  
Zone North Sales Office  
4B/06, 4th Floor, Crown Plaza  
27/5 Mathura Road, Sector  
15A Faridabad - 121007  
Near Neelam Chowk Ajrona  
Metro Station, Haryana  
India

Lucy Electric (Thailand) Ltd:  
388 Exchange Tower, 37th  
Floor Unit 3702, Sukhumvit  
Road, Klongtoey Sub district,  
Klongtoey District, Bangkok,  
10110, Thailand  
t: +66(02) 663 4290  
Email: salesthailand@  
lucyelectric.com

Lucy Electric (Thailand) Ltd:  
500/64 M.3  
Hemaraj Eastern Seaboard  
Industrial Estate, (Free Zone)  
Tasit, Pluakdeang Rayong  
21140  
t: + 66 (0)33 684 333  
Ext. 6000  
Email: salesthailand@  
lucyelectric.com

Lucy Asia Pacific Sdn Bhd  
(LAP):  
L11-07 & L11-08, Level 11  
PJX HM Shah Tower  
No 16A, Persiaran Barat  
46050 Petaling Jaya Selangor  
t: +603 74910700  
Email: salesMalaysia@  
lucygroup.com

Lucy Switchgear Arabia  
Co. Ltd:  
Riyadh Office, Short Address:  
RUQB6171, Building No:6171  
Said Bin Zaid Street  
Secondary No: 2836  
Qurtubah Dist. Postal code:  
13245 First Floor Office No: 21  
City: Riyadh, Kingdom of  
Saudi Arabia

Lucy Switchgear Arabia  
Co. Ltd:  
Dhahran Factory, Short  
Address: ELDA3362  
Building No:3362,  
Al Widad Street  
Secondary No: 7357 Adh  
Dhahran Industrial Dist.  
Postal code: 34521  
City: Dhahran, Kingdom  
of Saudi Arabia

Lucy Switchgear Arabia  
Co. Ltd:  
Jeddah Office,  
Short Address: JERA4039  
Building No:4039 Qasim  
Zinah Street  
Secondary No:8781  
Ar Rawdah Dist.  
Postal code: 23434  
City: Jeddah, Kingdom  
of Saudi Arabia

Lucy Electric South Africa  
(Pty) Ltd:  
3 Sacks Circle,  
Bellville South  
Cape Town 7530,  
South Africa  
t: +27(0)11 0257490

Lucy Electric East Africa:  
13th Floor Landmark Plaza  
Argwings Khodhek Road  
PO Box 00606  
Nairobi  
Kenya  
t: +254 (20) 20 3673 927

Lucy Electric South Africa  
(Pty) Ltd:  
Unit 12 & 13, Block C,  
Honeydew Business Park,  
1503 Citrus Street, Laser Park  
Honeydew 2170  
South Africa  
t: +27(0)11 0257490

Lucy Equipamentos  
Elétricos Ltda:  
Av. das Araucárias 2558  
Thomaz Coelho  
CEP 83707-067  
Araucária  
Paraná State, Brazil  
t: +55 (41) 2106 2801

Lucy Electric Australasia  
Pty Ltd:  
Jubilee Place,  
470 Saint Pauls Terrace  
Fortitude Valley, 4006 QLD  
Australia  
t: +61 467 237 879  
Email: salesaustralia@  
lucyelectric.com

Lucy Electric EV Infrastructure  
Ltd:  
Station Road  
Sowerby Bridge  
West Yorkshire, HX6 3AF  
t: +44 (0)1422 553 000

Lucy Electric Energy  
Services Ltd:  
Howland Road  
Thame  
Oxfordshire  
OX9 3UJ. United Kingdom  
t: +44 (0)1844 267 256

[lucyelectric.com](http://lucyelectric.com)