

CIRCUIT BREAKER OPERATION

Operate Circuit Breaker to 'OFF'

1. Remove padlock if fitted from 'CIRCUIT BREAKER' Mechanism OFF button and Press in the CIRCUIT BREAKER Mechanism 'OFF' button (RED BUTTON) to trip

2. Then release, once the 'CIRCUIT BREAKER' has tripped. (Optional) secure the 'CIRCUIT BREAKER' Mechanism 'OFF' button using a padlock.

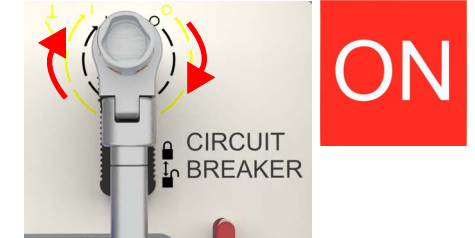


Operate Circuit Breaker to 'ON'

1. Pull down the circuit breaker slide cover to the 'unlocked' position.



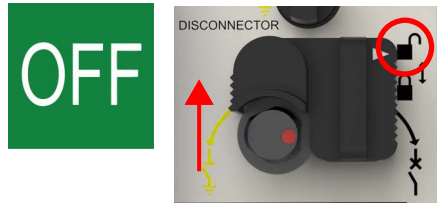
2. With the operating handle on the circuit breaker boss, rotate the ratchet mechanism one full revolution clockwise. At the end of the revolution the circuit breaker will close to 'ON'.



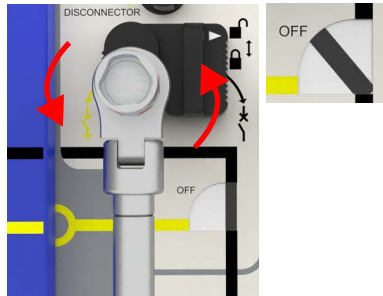
OPERATE CIRCUIT BREAKER TO 'EARTH-SELECTED'

For this operation, the circuit breaker must be in the 'OFF' position.

1. Push up the Disconnecter slide cover to the 'unlocked' position.



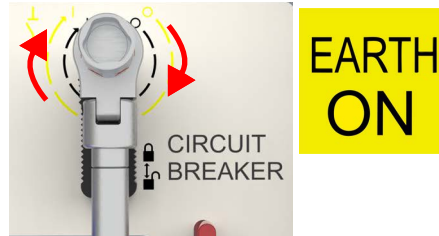
2. With the operating handle on the Disconnecter boss, rotate anti-clockwise to approximately 60° from 'ON' to 'OFF'.



3. Rotate the Disconnecter selector knob anticlockwise to 'EARTH'. With the operating handle on the Disconnecter boss, rotate anti-clockwise to approximately 60° from 'OFF' to 'EARTH'.

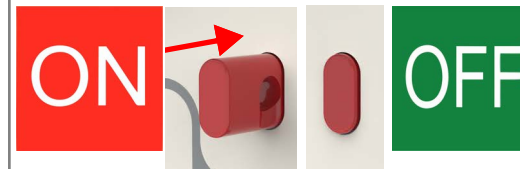


4. With the operating handle on the circuit breaker boss, rotate the ratchet mechanism one full revolution clockwise. At the end of the revolution the circuit breaker will close 'EARTH-SELECTED'.

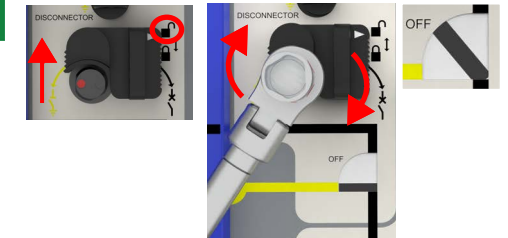


Circuit Breaker remove 'EARTH' and return Disconnecter to 'MAIN ON'

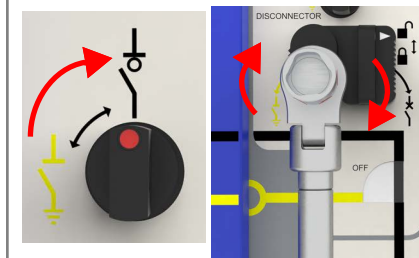
1. Press the red button to trip.



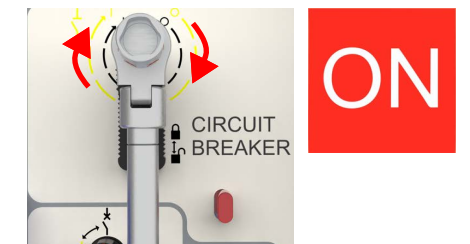
2. Push up the Disconnecter slide cover to unlock. With the operating handle on the Disconnecter boss, rotate clockwise to approximately 60° from 'EARTH-SELECTED' to 'OFF'.



3. Rotate the Disconnecter Selector knob Clockwise. Insert operating handle on to the 'Disconnecter' boss and rotate clockwise approximately 60° from 'OFF' to 'ON'.



4. With the operating handle on the circuit breaker boss, rotate the ratchet mechanism one full revolution clockwise. At the end of the revolution the circuit breaker will close to 'ON'.



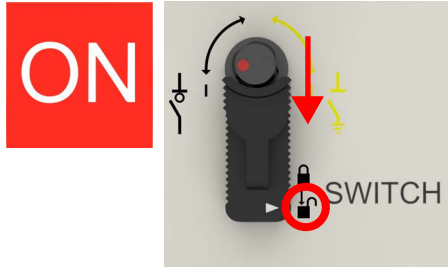
WARNING

If the operator does not follow the correct operating procedure whilst operating either mechanisms there is the potential for the failsafe facility within the handle to operate and render the operating handle useless for further operations.

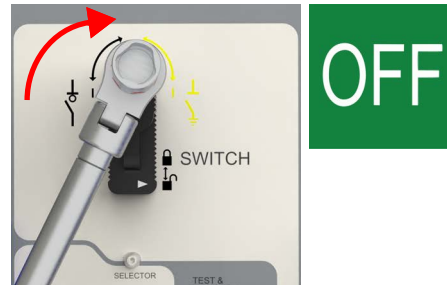
LOAD SWITCH OPERATION

Load Switch from 'ON' to 'OFF'

1. Pull down the switch slide cover to the 'unlocked' position.

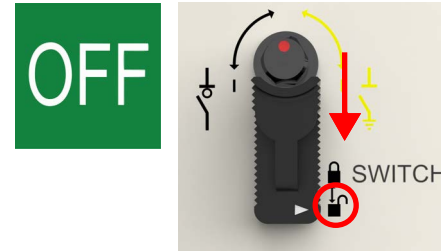


2. With the operating handle on the switch boss, rotate clockwise approx 90° to O until the load switch opens to 'OFF'.



Load Switch from 'OFF' to 'ON' ('MAIN ON' selected)

1. Pull down the switch slide cover to the 'unlocked' position.



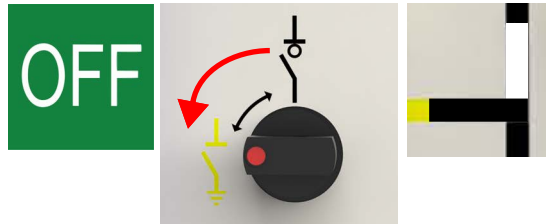
2. With the operating handle on the switch boss, rotate anti-clockwise 90° until the load switch closes to 'ON'.



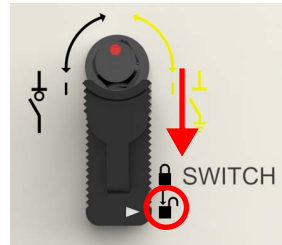
Load Switch 'OFF' to 'EARTH-SELECTED'

For this operation, the load switch must be in it's 'OFF' position.

1. Rotate the selector knob anti-clockwise to 'EARTH-SELECTED'.



2. Pull down the switch slide cover to the 'unlocked' position.

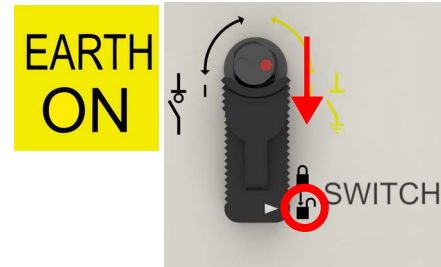


3. With the operating handle on the switch boss, rotate clockwise 90° until the load switch closes to 'EARTH-SELECTED'.

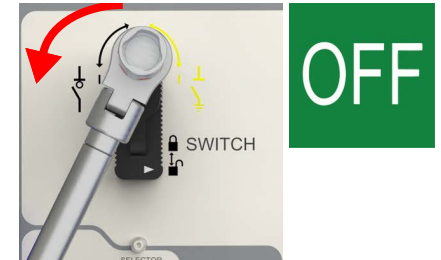


Load Switch remove 'EARTH-SELECTED' and return selector to 'MAIN ON'

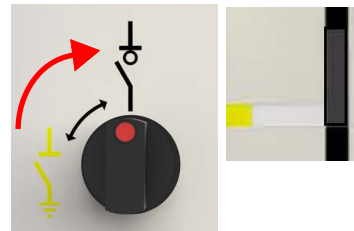
1. Pull down the switch slide cover to the 'unlocked' position.



2. With the operating handle on the switch boss, rotate anti-clockwise 90° until the load switch closes to 'OFF'.



3. Rotate the selector knob clockwise to 'OFF'.



2. With the operating handle on the switch boss, rotate anti-clockwise 90° until the load switch closes to 'ON'.



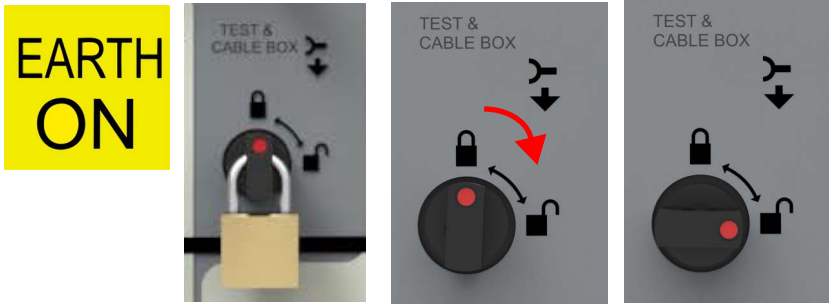
WARNING If the operator does not follow the correct operating procedure whilst operating either mechanisms there is the potential for the failsafe facility within the handle to operate and render the operating handle useless for further operations.

CABLE BOX ACCESS

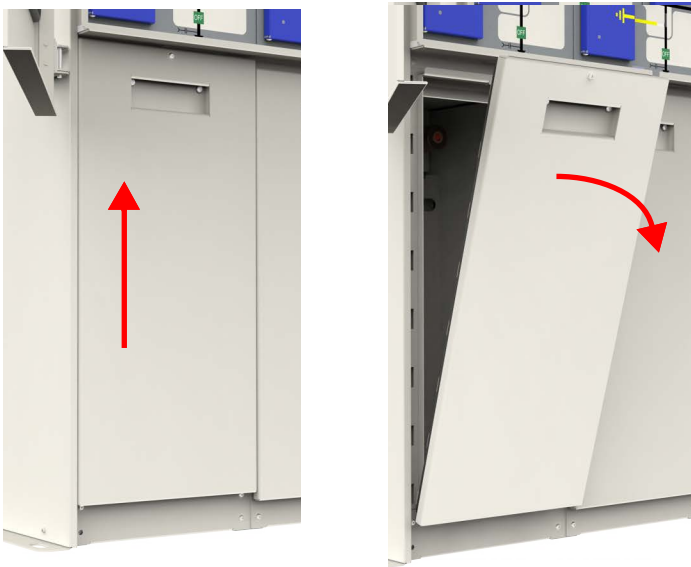
Cable Box Interlock Release For Cover Removal

For this operation, ensure the relevant circuit breaker or switch is closed to **'EARTH-SELECTED'**.

1. With the Disconnecter in **'EARTH-SELECTED'** rotate the 'Test & Cable Box' knob clockwise to 'unlock'.



2. Lift the cover up and away from the cable box.



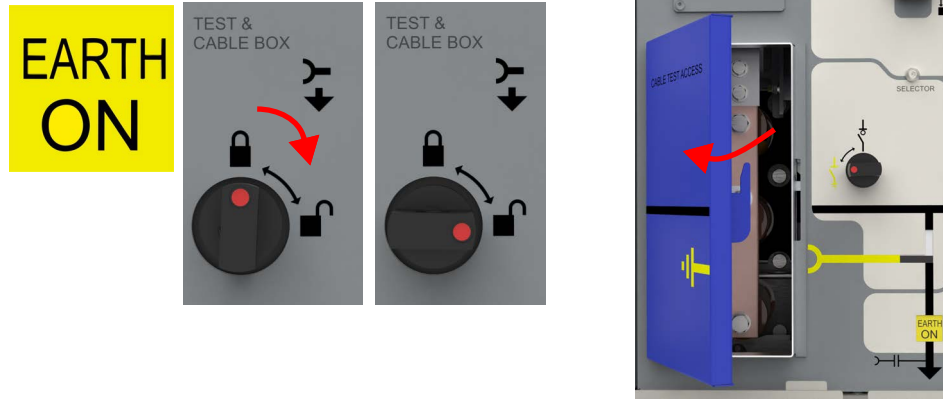
NOTE: The relevant function cannot be removed from **'EARTH-SELECTED'** until the cable box cover is refitted.

EARTH & TEST ACCESS

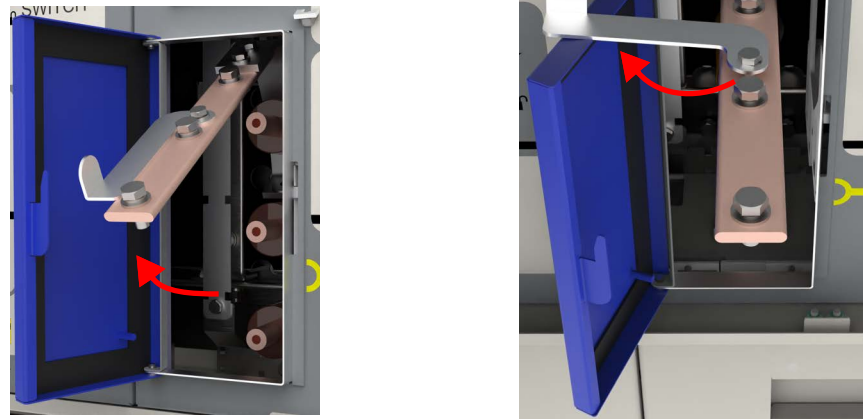
Earth & Test Interlock Release For Cable Testing

For this operation, ensure the relevant circuit breaker or switch is closed to **'EARTH-SELECTED'**.

1. With the Disconnecter in **'EARTH'** rotate the 'Test & Cable Box' knob clockwise to 'unlock'.
2. Open the relevant functions test access door.



3. Pull the Earth bar's handle out and away from the casing and proceed to lift up to the horizontal position.
4. With the casing in the horizontal position, the test conductors are accessible.



NOTE: The relevant function cannot be removed from **'EARTH-ON'** until the test access door is closed.